

This manual was created to ensure you easy access and a quick look-up guide to programming solutions.
All programming is done using the arrow keys (UP, DOWN, LEFT and RIGHT) and using the ENTER key to exit out of the sub category.

NOTE: Keypad legend refers to toggle arrow use. Programming is identified three ways.

1. Posted inside of door.
2. Sticker included with UCB kit.
3. Keypad legend on the inside of this manual.

QUICK REFERENCE GUIDE

UP ARROW scrolls up
DOWN ARROW scrolls down or next main topic
RT ARROW scrolls into the topic
LT ARROW scrolls out of topic
ENTER selects and out of topic
Can always reselect the programming button to exit out of any category

AUDIT DATA	Select Historical Vends Select Interval Vends Cash History Cash Interval Clear Audit DEX to SD Card Clear DEX - <i>Password controlled</i>
ACCESS CODE	New Password
SET PRICE	Set Machine Price Set Tray Pricing Set Selection Pricing
SET PRICES S1-S3	<i>Only shows if Auxiliary Machine is connected to main machine.</i> Set Machine Price Set Tray Pricing Set Selection Pricing
MESSAGE SET UP	How to Program Message Set Message Delay Set Message Speed
VENDING MACHINE CONFIGURATION	All Drop Sensors Drop Sensor modes Select Drop Sensor Homing Set Clock/Calendar Set Bill Escrow Force Vend DEX Asset Number Change Tube Fill Motor Coupling <i>for National machine</i>
ADVANCED PROGRAMMING INSTRUCTIONS	Group Products LED Lights Aux LEDs Set Single Vend Set Auto Discounts Set Winner Mode Set Sales Tax Mode Tube Total Value Set Enable/Disable Machine Selection Lockout
MMC / SD	<i>Only if SD card installed</i> How to Load File How to Save File
SERVICE	Select Test Motor Test

TO PROGRAM YOUR UCB

1. Unlock door, press programming button on top right of the harness board (AP unit) OR on back display board (National unit).
2. DOWN ARROW until your topic appears in the window. UP ARROW will scroll back up to main topics. RT ARROW will get you into the topic of choice and LT ARROW will get you out of sub topic.

To escape out of category: 1) press the ENTER key or 2) reselect the programming button inside the door.

AUDIT DATA

Used to collect or view data made by vends and cash/credit by machine.

SEL. HIS 0	Shows historical vends made. (NON resettable)
SEL. INT 0	Shows interval vends made since last reset
CSH. HIST 0.00	Shows historical sales total (NON resettable)
CSH. INT 0.00	Shows interval sales total since last reset
CLR. AUDIT	Clear Audit: NO/YES. Press any key to toggle NO/YES, press the ENTER key to select. If YES is selected, the system clears the interval audit data only. Audit data will clear when door switch is cycled.
DEX TO SD CARD	Toggle to NO/YES, press the ENTER key to select. If YES is selected, the system loads SD card with DEX data.
CLEAR DEX	(Only shows when correct password is entered). Toggle to NO/YES, press the ENTER key to select. If YES is selected, the system clears the DEX data only. DEX data will clear when door switch is cycled.

ACCESS CODE

NEW PASSWORD To be able to get into any programming at all. Enter new password or 0 to disable function. Press the ENTER key to exit.

PASSWORD: XX>XX CONFIRM? NO/YES

AUDIT PASSWORD Allows you into Audit Data and nothing else.

PASS.AUD: XX.XXX CONFIRM? NO/YES

SET PRICE

SET MACH PRICING Set Price of all the products in machine set at the same price. Insert price using the keypad and press the ENTER key to store price or select again to exit.

**ALL PRICES XX.XX
CONFIRM? NO/YES**

SET TRAY PRICE Used to enter price for an entire tray. Once SEL TRAY was selected, enter first space location number. Select tray price, press the ENTER key to store, or press LT arrow to exit without change. System will go to next tray automatically, if no other changes, select enter each time to exit.

_____ *PRICES: XX.XX

SET SEL PRICE Set Selection Price. Ability to select specific product locations for specific pricing. Enter specific space location, enter price and press the ENTER key to store price or select LT arrow to exit without change. System will go to next selection automatically, if no other changes, select enter each time to exit.

___ PRICE: _ _ _ _

SET PRICES S1-S3

Only shows in menu if Auxiliary machine 1,2,3 is connected.

SET MACH PRICING Set Machine Pricing. To be used for all products in machine set at the same price. Insert price using the keypad and press the ENTER key to store price or select again to exit.

**ALL PRICES XX.XX
CONFIRM? NO/YES**

SET TRAY PRICE To be used to enter price for entire tray, every tray can be different pricing. Once SEL TRAY was selected, enter first space location number. Select tray price, press the ENTER key or * to store, or press LT arrow to exit without change. System will go to next tray automatically, if no other changes, select enter each time to exit.

_____ *PRICES: XX.XX

SET SEL PRICE Set Selection Price. Ability to select specific product locations for specific pricing. Enter specific space location, enter price and press the ENTER key or * to store price or select LT arrow to exit category. System will go to next selection automatically, if no other changes, select enter each time to exit.

___ PRICE: _ _ _ _

MESSAGE SET UP

This is to program a scrolling text message on the digital display. (max 50 characters) Message will scroll when no selection or amt. is displayed. RT arrow to get into this category

MESSAGE Using keypad alpha-numerically,(see keypad legend for character input) enter your message and press the ENTER key or * to store message.

TXT: _____

MESSAGE DELAY Enter time in seconds before message is displayed. (0 is Message disabled, 1-99 is delay seconds)

MSG DELAY: _____

MESSAGE SPEED Scrolling speed of message. (0 is message steady, not scrolling, max 15 characters) 1 is slow and 9 is fast as guide. Press the ENTER key to store and LT arrow to exit category.

MSG SPEED: _____

VENDING MACHINE CONFIGURATION

This category is selected to configure machine for drop sensors, DEX, clock, bill or change escrow. Use RT arrow to select sub categories.

DROP SENSOR Select drop sensor mode # and press the ENTER key to store. (Credit returned after misvend cycle complete)

0 = OFF or default factory setting

1 = Credit returned after one cycle, no selection lock

2 = Credit returned after one cycle, selection locked after 3 consecutive misvends

3 = Selection locked after 5 partial attempts after 1st full cycle

4 = Selection not locked after 5 partial attempts after 1st full cycle

5 = Selection motor stops when product falls (2 full turns maximum)

6 = Two full cycles possible before credit return, 2 sec delay after 1st cycle, 5 sec delay end of 2nd cycle before returning credit (motor stops on drop during 2nd cycle)

DROP SENSOR: _____

SEL DROP HOMING Select Drop Sensor Homing. To select YES or NO (using ENTER key to store decision) if want coil to reset to home position when door is opened. LT arrow out of category.

DRP MOT HOME: NO/YES

VENDING MACHINE CONFIGURATION

SEL DROP SENSOR

Select Drop Sensor. Insert selection to disable drop sensor on individual selection(s). (disable=0) or leave unchanged. Press the ENTER key for next selection, will go through rest of tray. Press DOWN arrow to advance to next category

___ **DROP S.O.**

SET CLOCK

Set Clock/Calendar. Runs on a 24 hour clock that includes automatically Daylight Savings Time.

DAY OF THE MONTH: Insert day, press the ENTER key

MONTH: Insert month, press the ENTER key

YEAR: Insert year, press the ENTER key

HOUR: Insert hour, press the ENTER key

MINUTES: Insert minutes, press the ENTER key

(Stored when "Enter" is pressed after minutes).

SET BILL ESCROW

Holds bill(s) until selection. Choice to hold first bill or last bill. Press any key to toggle through selections press the ENTER key to store and return.

BILL ESCROW (ESCR): NO Choices: No, 1'st Bill, Last Bill

FORCE VEND

Not a change machine, have to buy product. Choice is NO or YES to force vending a product. Press the ENTER key or * to store and return LT arrow to exit sub category.

FORCE VEND: NO/YES

ASSET NUMBER

Dex Asset Number. To program your DEX identification number. Program the alphanumeric (maximum 12 characters) asset number of the machine and press the ENTER key. See keypad legend label for number input mode.

ID:

TUBE FILL

NO/YES, YES, with door open tube fill mode allows you to drop coins through top to fill. Will count coins internally. Press NO if only testing the vend with money when door is open. * If in NO mode- Turn OFF and turn YES on when tube is full so to keep current change count.

TUBE FILL: NO/YES

MOTOR COUPLING

Mainly used for National Machines – Shown when machine is able to couple coil motors for tray or single space double coil vend.

___ **COUPLED: NO/YES**

ADVANCED PROGRAMMING INSTRUCTIONS

Advanced Programming requires password

GROUP PRODUCTS

Used when multiple locations of same product in machine. Will rotate drop between products so product stays fresh and fronted.

SET GROUP

UPFRONT

Scroll UP or DOWN to pick a group (01-99), Press the ENTER key, enter selections and when done, Press the ENTER key.

01 SELECTION: ___

RESET UPFRONT Toggle NO/YES with any button. Press the ENTER key. This will reset all of the product groups.

RESET UPFR: NO

LED LIGHTS

Used to control the LED lights that are inside and outside of machine.

PERCENTAGE DIMMING Ability to dim the LED lights when not in use. Until sensor is activated. 0=LEDs completely off, and 100=LEDs are full brightness. If never want lights to turn off, set to 100. Use keypad numerically to enter, Press the ENTER key to accept.

PER.DIMMING: 0-100

TIME DIMMING Ability to set time on how long you want the lights to stay bright as above setting, until sensor is activated. Set in minutes and seconds. Maximum time is 30 minutes. Use keypad numerically to enter time.

TIME: XX m: XXs

AUXILIARY LEDS

To control Vend LED lights. To either stay on after vend or flash and how long to remain on.

STEADY Set time in seconds how long LEDs will stay on after vend. Press the ENTER key.

TIMEOUT: 00S

FLASHING Set time in seconds to remain flashing. Press the ENTER key to exit.

LED ON: 00S

LED OFF: 00S

TIMEOUT: 00S

DISABLED Press the ENTER key. Aux LEDs will be off.

AUX LEDS: OFF

SET SINGLE VEND

Ability to allow a single vend / NO is multivend.

SINGLE VEND: NO/YES

AUTO DISCOUNT

To be able to establish discount on single items that may be approaching product expiration date, or need to move product. Ability to establish different levels of discount up to maximum discount or select number to be discounted. Options listed below use alphanumeric keypad, press the ENTER key to accept and again to exit.

DISC: _____

SELECT: MACHINE: DISABLE: CLEAR

1'ST LEVEL % XX

First discount level (maximum 50%)

1'ST NO SALE: XX

How many days of no sales on a selection before 1'st level discount applied

ADVANCED PROGRAMMING INSTRUCTIONS

2ND LEVEL % XX

2nd discount level if not moving product with 1st discount, maximum discount 50%

2ND NO SALE: XX

How many days of no sales on a selection before 2nd level discount applied

DIS.SEL. SOLD: XX

How many sales needed on discount selection before changed back to original price

MAX. SEL DISC: XX

Total number of selections discounted

DOORSWT.CLR: NO/YES

Auto clear after refresh, press any key to toggle NO/YES, press the ENTER key to store and return.

WINNER MODE

To be able to select a number between 50-500. The purchase made at this vend will receive the selection for free as a "winner." Select ENTER to exit.

WIN SELECT: _ _ _

SALES TAX

Ability to add Sales Tax percentage from 0-50% (0% sales tax disabled)

SALES TAX: _ _ _

TUBE TOTAL VALUE

Total value in the change tube

TUBE VAL: _ _ _

MACHINE DISABLE

Five different times settings that are able to perform multiple option to disable the machine for a selected period of day(s) or time(s)

Disable Time #1 of 5 options - Option(s) to disable Monday, Tuesday, Wednesday, Thursday, Friday, Saturday, Sunday, Weekdays, Everyday.

DISABLE: _ _ _ _ _

Enter times of disablement per day selected above. Input standard time format. Toggle AM/PM with any button when flashing.

DISABLE: _ : _ PM

Option(s) to ENABLE Monday, Tuesday, Wednesday, Thursday, Friday, Saturday, Sunday, Weekdays, Everyday.

ENABLE: _ _ _ _ _

Enter time to ENABLE, Input standard time format. Toggle AM/PM with any button when flashing.

ENABLE: _ : _ PM

DISABLE CLEAR will clear the machine of prior DISABLE/ENABLE setting. Toggle NO/YES with any button.

DISAB.CLEAR: NO

SELECTION LOCKOUT

5 Different times settings that are able to perform multiple option to lockout the machine for a selected period of day(s) or time(s).

Enter specific selection number to be locked out and press the ENTER key. 25 maximum selections.

ADVANCED PROGRAMMING INSTRUCTIONS

SEL.LOCKOUT: _ _

Option(s) to DISABLE Monday, Tuesday, Wednesday, Thursday, Friday, Saturday, Sunday, Weekdays, Everyday, Toggle the day(s) of the week you want this selection(s) locked out.

DISABLE: _ _ _ _ _

Enter times to DISABLE per day selected above. Input standard time format. Toggle AM/PM with any button when flashing.

DISABLE: _ : _ PM

Option(s) to ENABLE Monday, Tuesday, Wednesday, Thursday, Friday, Saturday, Sunday, Weekdays, Everyday.

ENABLE: _ _ _ _ _

Enter time to ENABLE, Input standard time format. Toggle AM/PM with any button when flashing.

ENABLE: _ : _ PM

CLEAR will clear the machine of prior DISABLE/ENABLE setting. Toggle NO/YES with any button.

DISAB.CLEAR: NO

MMC / SD

This section is to update software, pricing or applications

Note: MMC/SD default is normal mode. Only prices will be loaded and/or saved. For all machine settings to be loaded and/or saved, an operator code of 13931/Enter must be entered before selecting MMC/SD.**LOAD FILE** Need ID number. Toggle to NO/YES - Enter file name to be loaded. Press the ENTER key. Press any key to toggle NO and Yes, press the ENTER key to load and return.

SAVE FILE

Need ID number. Toggle to NO/YES - Enter file name to be saved. Press the ENTER key. Press any key to toggle NO and YES, press the ENTER key to load and return.

SERVICE

This section is the Service testing mode to test the motor.

SELECT TEST To test motor, YES to select to test with door open and test the vend drop.

SEL. TEST: NO/YES

LOADER # xxx - shows loader version

(MODEL MACHINE) # xxx- shows firmware version

S.N.: XXXXXXXXXXXX

MOTOR TEST

Press any key to toggle between NO and YES. Press the ENTER key to store. IF YES is selected, UCB will run each motor one vend cycle sequentially from first selection to last selection; will stop if motor fails.

MOTOR TEST : NO/YES

UCB Keypad Programming Charts

Rev 3.0 – 6-12-14

1 ,,,:;	↑ 2 ABC	3 DEF
← 4 GHI	5 JKL	6 → MNO
7 PQRS	8 ↓ TUV	9 WXYZ
0 b BS EOL	C/CE ENTER	

VE5860 – AP 123

← A	↑ B	C →	D
E	↓ F	G	H
1 ,,,:;	2 ABC	3 DEF	4 GHI
5 JKL	6 MNO	7 PQRS	8 TUV
9 WXYZ	10 b BS EOL	△	▽ ENTER

VE5865 – AP LCM

1 ,,,:;	↑ 2 ABC	3 DEF
← 4 GHI	5 JKL	6 → MNO
7 PQRS	8 ↓ TUV	9 WXYZ
* CLEAR ENTER	0 b BS EOL	# NOT USED

Revision Door (All Models)

Press and hold small push button on harness board for 5 seconds to enter program mode

1 ,,,:;	2 ABC ↑	3 DEF	4 GHI
5 JKL ←	6 MNO	7 PQRS →	8 TUV
9 WXYZ	0 B - Blank BS - Backspace EOL - End of Line ↓	RESET ENTER	

VE5830 – Rowe 5900

Press and hold small push button on harness board for **5 seconds** to enter program mode

A	1
↑	,. . ;
B	2
↓	ABC
C	3
→	DEF
D	4
←	GHI
E	5
	JKL
F	6
	MNO
G	7
	PQRS
H	8
	TUV
J	9
	WXYZ
K	10
ENTER	B - Blank BS - Backspace EOL - End of Line

VE6855 – AP 110 Series

Press and hold small push button on display board for **5 seconds** to enter program mode.

A	1	6
↑	,. . ;	MNO
B	2	7
↓	ABC	PQRS
C	3	8
→	DEF	TUV
D	4	9
←	GHI	WXYZ
E	5	10
	JKL	b BS EOL
F		
G		ENTER

VE5844

VE5840 – National 145-146

Press and hold small push button on display board for **5 seconds** to enter program mode.

A	B	C
	↑	
D	E	F
←		→
G	H	J
	↓	
1	2	3
,. . ;	ABC	DEF
4	5	6
GHI	JKL	MNO
7	8	9
PQRS	TUV	WXYZ
*	0	#
	B - Blank BS - Back Space EOL - End of Line	ENTER

VE5880 – National 147-148

VE5885 – National 157-158

VE5890 – National 167-168

Press and hold small push button on harness board for **5 seconds** to enter program mode

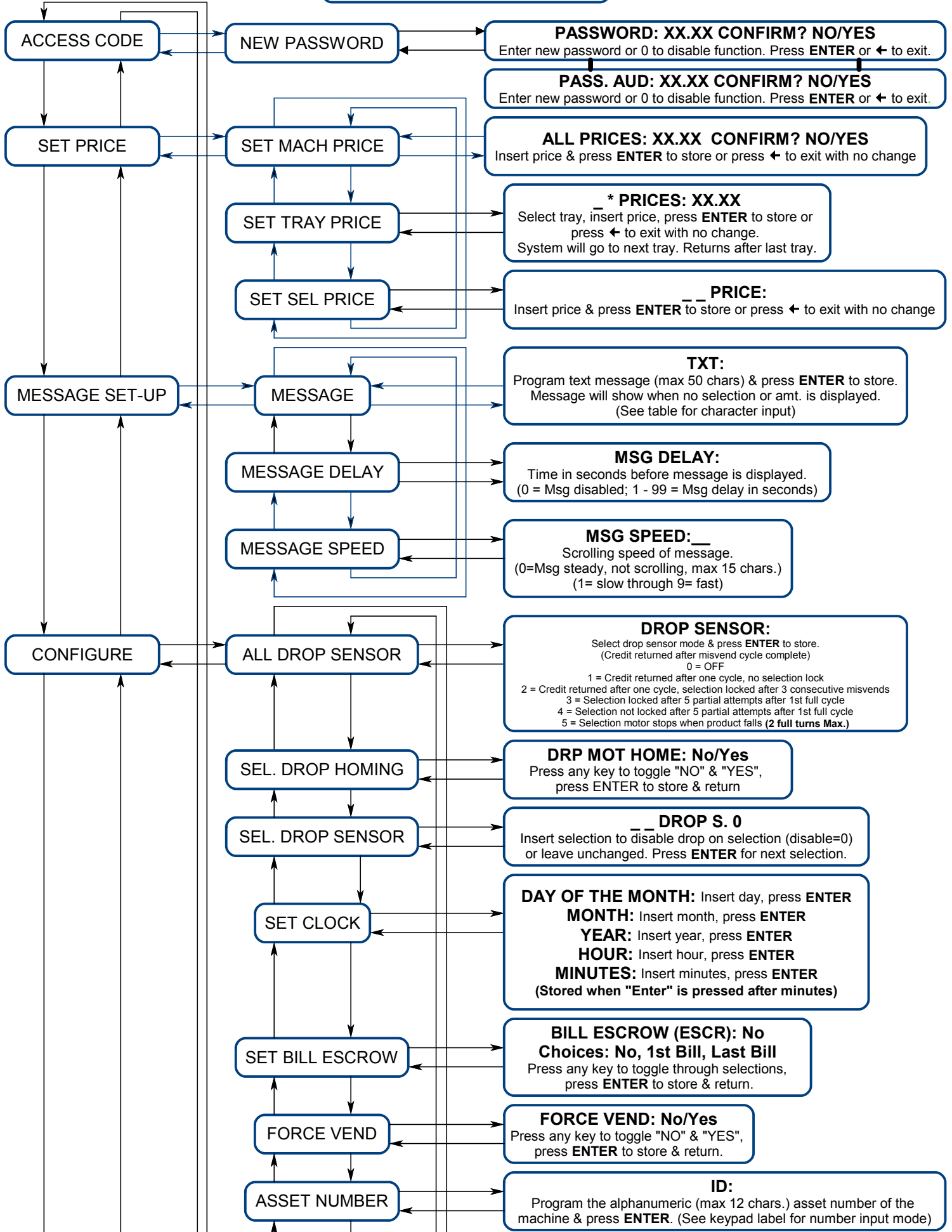
A	1	2
↑	,. . ;	ABC
B	3	4
↓	DEF	GHI
C	5	6
→	JKL	MNO
D	7	8
←	PQRS	TUV
E	9	10
	WXYZ	B - Blank BS - Backspace EOL - End of Line
F	11	12
G	13	14
		Enter

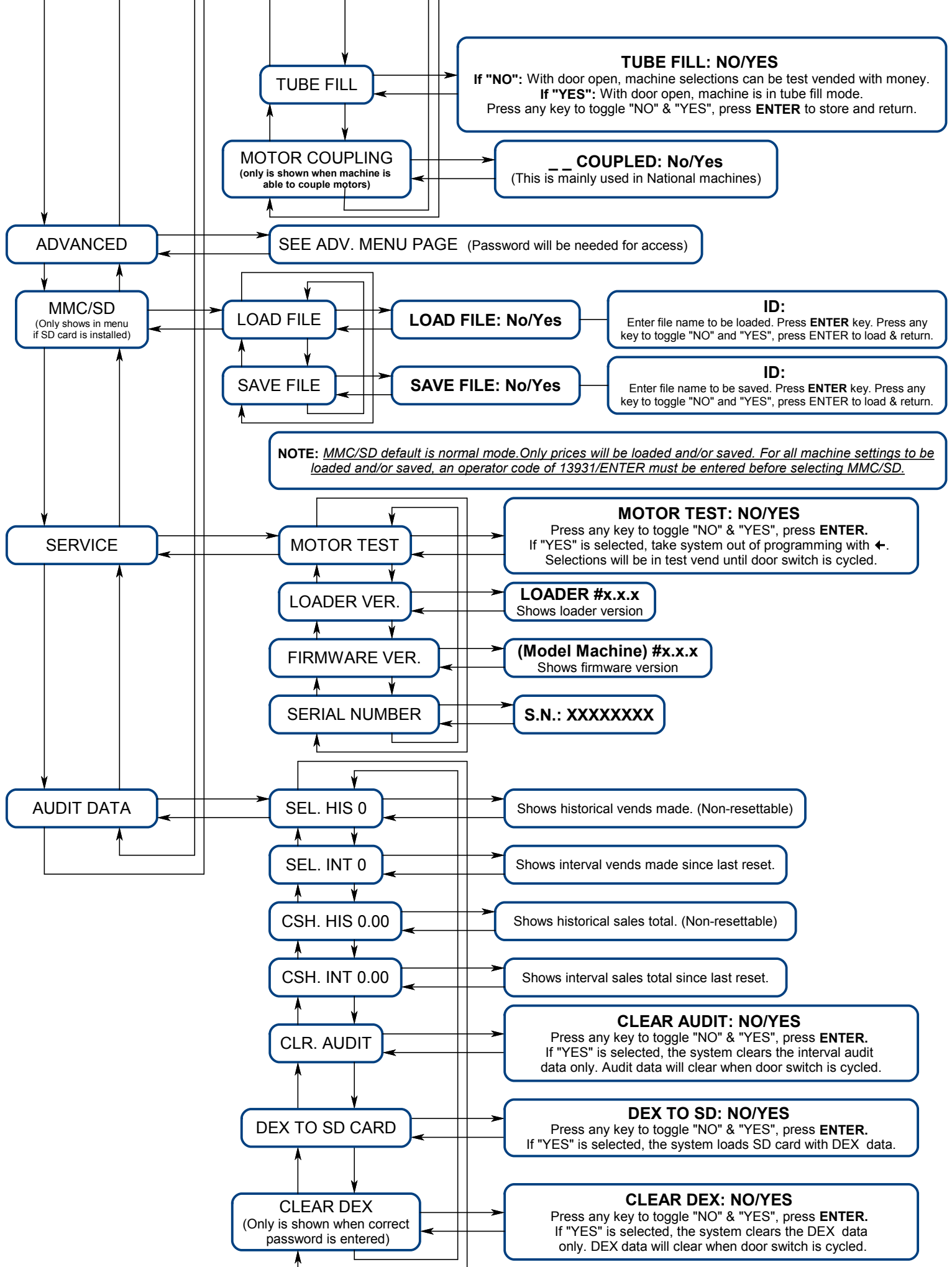
VE5850 – AP 6000-7000

1	↑ 2	3
,. . ;	ABC	DEF
← 4	5	6 →
GHI	JKL	MNO
7	8 ↓	9
PQRS	TUV	WXYZ
*	0	#
NOT USED	b BS EOL	CLEAR ENTER

AMS

PROGRAMMING INSTRUCTIONS
Place and leave in machine for reference





ADVANCED PROGRAMMING INSTRUCTIONS
Place and leave in machine for reference

CONFIGURE

ADVANCED

PASSWORD:0

Password is 8700

MMC/SD

GROUP. PROD

PROD. UPFRONT #1

SELECTION: _ _
Enter selections. When done, press "ENTER". Display will show "CLEAR: NO". Press "ENTER" to accept or toggle to "YES" to clear. (5 selections max.)

PROD. UPFRONT #2

SELECTION: _ _
Enter selections. When done, press "ENTER". Display will show "CLEAR: NO". Press "ENTER" to accept or toggle to "YES" to clear. (5 selections max.)

PROD. UPFRONT #3

SELECTION: _ _
Enter selections. When done, press "ENTER". Display will show "CLEAR: NO". Press "ENTER" to accept or toggle to "YES" to clear. (5 selections max.)

LED LIGHTS

PERC. DIMMING

PER. DIMMING: 0-100
0 = LED's completely off
100 = LED's full on

TIME DIMMING

TIME: XXm:XXs
Time is set in minutes & seconds
Max time is 30 minutes

SET SINGLE VEND

SINGLE VEND: NO/YES

AUTO DISCOUNT

DISC: _ _ _ _
SELECT.; MACHINE; DISABLE; CLEAR

1st Level % XX
(1st discount level) (Max%=50%)

1st No Sale:XX
(How many days of no sales on a selection before 1st level discount applied)

2nd Level % XX
(2nd discount level) (Max%=50%)

2nd No Sale:XX
(How many days of no sales on a selection before 2nd level discount applied)

Dis. Sel. Sold:XX
(How many sales needed on discount selection before changed back to original price)

Max. Sel Disc:XX
(Total number of selections discounted)

DOORSWT. CLR: NO/YES
Press any key to toggle "NO" & "YES",
press ENTER to store & return

WINNER MODE

WIN SELECT: _ _ _ _
Select a number between 50-500. The purchase made at this vend will receive the selection free

SALES TAX

SALES TAX: _ _ . _ _
Sales Tax 0-50%. (0% sales tax disabled.)

TUBE TOT. VALUE

TUBE VAL: _ _ . _ _

