



MODEL 35" and 39" LOW TEMP

GLASS FRONT MERCHANDISER
ILLUSTRATED PARTS MANUAL

L0076 REV M

AUTOMATED MERCHANDISING SYSTEMS INC
255 WEST BURR BLVD.
KEARNEYSVILLE, WV 25430
304-725-6921 - Fax 304-725-6983

info@amsvendors.com
www.amsvendors.com

INTERNATIONAL A.M.S. S DE RL DE CV
KM. 9 CARR. AL CASTILLO NO. 8200
MPIO. DE EL SALTO, JAL. MEXICO 45680
5233-3-6-88-07-17 - Fax 5233-3-6-88-13-14

www.amsint.com.mx
servicio@amsint.com.mx

THIS PAGE INTENTIONALLY LEFT BLANK

AMS Glass Front Low Temp Merchandiser
Model 35" and 39"
Illustrated Parts Manual

Table of Contents

SECTION	PAGE
INTRODUCTION	
General Introduction	5
Manual Organization	5
Merchandiser Identification	6
Patent Disclosure	7
Publication Notice	7
CABINET ILLUSTRATIONS	
Cabinet Covers and Screens Illustration	8
Cabinet Left Side and Center Illustration	10
Cabinet Right Side Illustration	14
CHILLER ILLUSTRATIONS	
Chiller Illustration—Angled View	16
Chiller Illustration—Top View	18
DOOR ILLUSTRATIONS	
Door, Coin Bay Illustration	20
Door, Hinges, Glass and Lighting Illustration	22
Door, External Parts Illustration	26
Door, Sensor System and Hopper Illustration	28
Door with Optional Trim and Finish Parts Illustration	32
POS Display Illustration	34
ELECTRICAL HARNESS ILLUSTRATIONS	36
HELIX ILLUSTRATIONS	
Helix Illustrations	54
1.5" Helix Tray Illustration	58
Bottle Tray Illustration	60
Universal (Snack/Candy/Food) Tray Illustration	64
Scrolling Price Tray Illustration	68
35" and 39" Horizontal Can Tray Illustration	72

THIS PAGE INTENTIONALLY LEFT BLANK

GENERAL INTRODUCTION

The purpose of this manual is to give our customers a way of identifying major service parts for repair and replacement. The illustrations and parts list in this manual are for identification only. Some optional parts are also shown.

Illustrations of these major parts are keyed with our part numbers. The illustrations help identify the general design, position and orientation of these parts. The note section may also give important information.

Please refer to the section on merchandiser identification on the following pages. Without the model style and serial number it may be difficult to identify the required part.

Parts should be ordered from your distributor.

It is our intent to assist our customers with up-to-date documentation. However., this manual may not show all parts, variations or changes. Some parts may be shown out of scale. This manual is itself subject to change without notice. If any errors are found, please notify AMS so the correction can be included in later revisions. Engineering data and third party information are generally not included. The graphical data, group assembly data, parts, part assembly, parts breakout information and tabular data conveyed by this manual is proprietary and belongs to AMS, and holders without prior consent of or without knowledge of and by AMS must surrender this data immediately.

All measurements are in inches except where specified as Metric.

MANUAL ORGANIZATION

This manual is divided into general sections. Each section is further divided into the various subsections or subassemblies. These lead off with one or more illustrations showing the parts and each part is identified with a number. Note that some part numbers are for assemblies fabricated as a unit at AMS and are replaceable only as a unit. Also, other part numbers identify optional parts which may or may not have been contracted for and factory installed by AMS.

The part number in the illustration is listed with the description or title for that part. In some instances there may be multiple parts to choose from. The correct service or repair part for the style of merchandiser must be selected. A quantities column in the list indicates quantities required.

There is a note section where additional information may be found.

This manual contains additional and new information for a vendor as currently manufactured. Older revisions of this manual should be kept with older vendors.

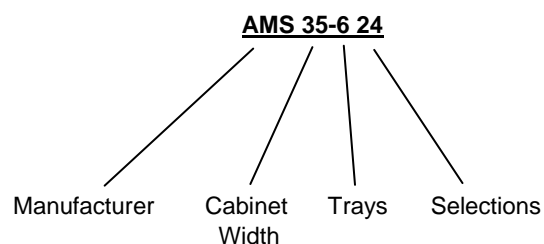
MERCHANDISER IDENTIFICATION

When requesting service, replacement parts or technical assistance, please use the **Model Number** and the **Serial Number with Date Code**, found on the Serial Plate (See **Figure 1** below) affixed to the merchandiser. The plate is usually located inside the window. The information contained on this plate is necessary to determine what parts, kits, or maintenance apply to your vendor.



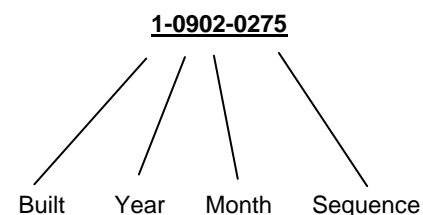
Fig. 1 Typical Serial Plate

Model Number Breakdown



AMS 35-6-24 means this vendor is an Automated Merchandising Systems merchandiser, **35"** wide, with six (**6**) trays making available twenty four (**24**) positions for different products.

Example of Serial Number Breakdown



1-0902-0275 is translated as U.S. built (1), manufactured in 2009, month of February, and was the 275th manufactured.

Note: Manufactured in Mexico, Built = (2)

The next two digits identify the month. The first month of the year is **01** and the last month is **12**.

PATENT DISCLOSURE

This merchandiser and/or certain of its components are covered by one or more of the following U.S. and international patents;

U.S. PATENTS: 6,145,699; 6,384,402; 6,520,373; 6,708,079; 6,794,634; 7,191,915; 7,343,220; 7,742,837; 7,446,302; 8,003,931

CANADIAN PATENT: 2,329,314

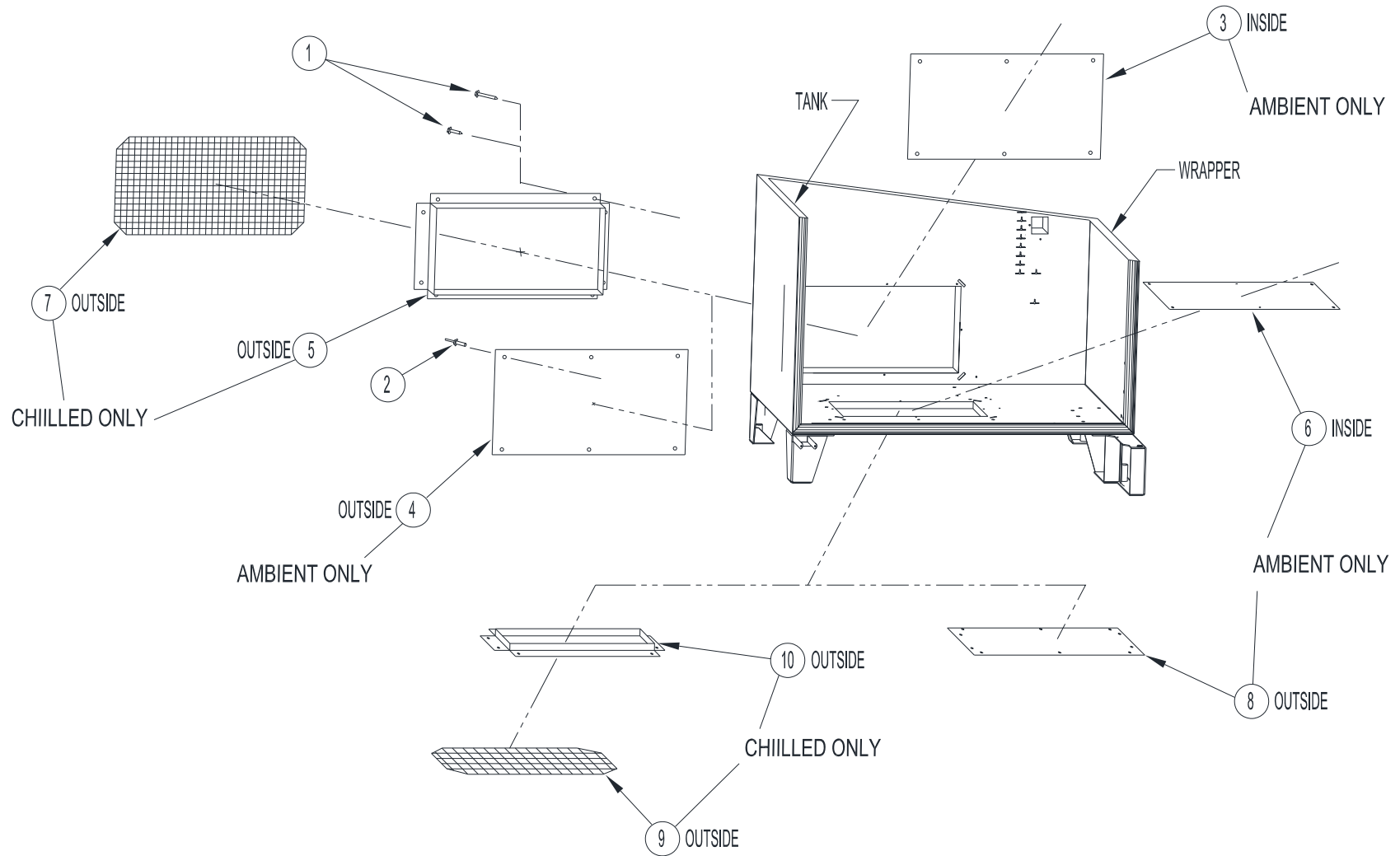
MEXICO PATENT: 230,714

PUBLICATION NOTICE

L0076, Revision M, ECN 3643, 8/15/16

It is our intent to assist our customers with up-to-date documentation: however, this manual may not contain all updates and is subject to revision without notice. Please contact our Service Department with your requests or comments.

CABINET COVERS AND SCREENS ILLUSTRATION

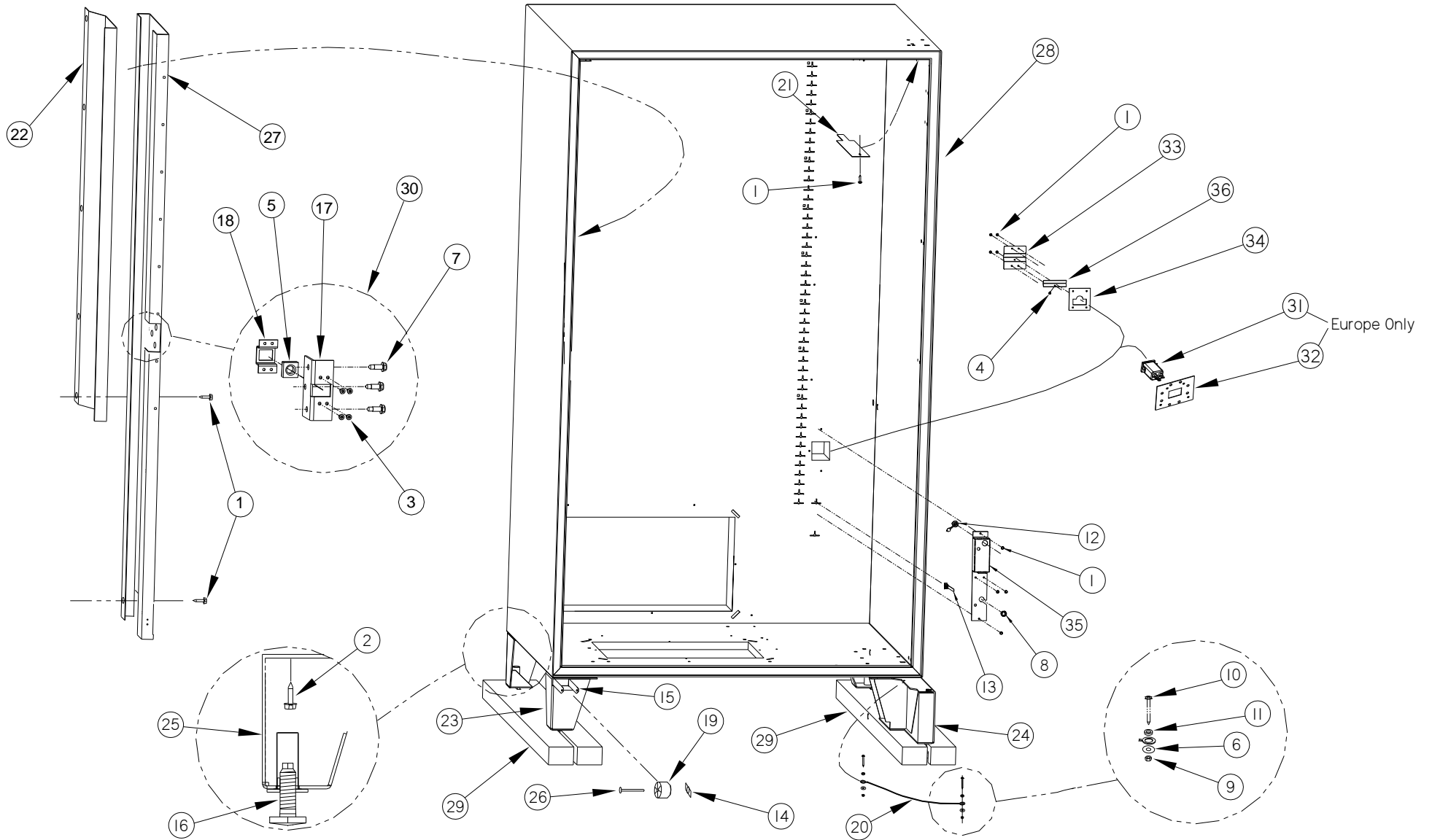


CABINET COVERS AND SCREENS PARTS LIST

ITEM	PART NO.	PART DESCRIPTION	QTY	NOTES
1	3000	Screw, Sheet Metal, TEK 8-18 (1/2" Long)		For One Trim
	3000-06	Screw, Sheet Metal, TEK 8-18 (3/4" Long)		For Rear Trim When Option P/N 21308 Is Installed
2	3009-02	Rivet, Pop, Steel, 1/8 (1/4" Long)	8	Quantities For One Cover
3	20187	Wrapper, Rear Chiller Hole Cover	1	Use For Ambient (No Chiller) Option
4	20187	Wrapper, Rear Chiller Hole Cover	1	Use For Ambient (No Chiller) Option
5	20275	Trim, Rear Chiller Hole	1	
6	20375	Tank - Rear Chiller Hole Cover (35")	1	Use For Ambient (No Chiller) Option
	20187	Wrapper, Rear Chiller Hole Cover (39")		
7	21308	Screen, Expanded Metal, Rear Chiller Hole	1	Add To Other Rear Screens
	20279	Screen, Rear Chiller Hole (39"), 4 Mesh.	1	1/4" x 1/4"
8	21481	Wrapper- Bottom Chiller Hole Cover (35")	1	Use For Ambient (No Chiller) Option
	20187	Wrapper- Bottom Chiller Hole Cover (39")		
9	21469	Screen, Bottom, Insect (35"), Ver. 2 Aluminum 18 x16 Mesh	1	
	21040	Screen, Rear Chiller Hole, (39") 8 Mesh (1/4" x 1/4")		
	20279	Screen, Rear Chiller Hole (39")		
10	21464	Trim, Bottom Chiller Hole (35") Ver. 2	1	
	20275	Trim, Rear Chiller Hole (39")		

NOTE: The rear opening and the bottom opening are not the same size on 35" Cabinets (ECN 1770). All screen materials are fitted to trim parts, and trim parts are attached to the outside of the cabinet with screws. The combination of screens may differ. Covers to seal the cabinet are always attached flush inside and outside the cabinet (without using trim) with rivets.

CABINET LEFT SIDE AND CENTER ILLUSTRATION



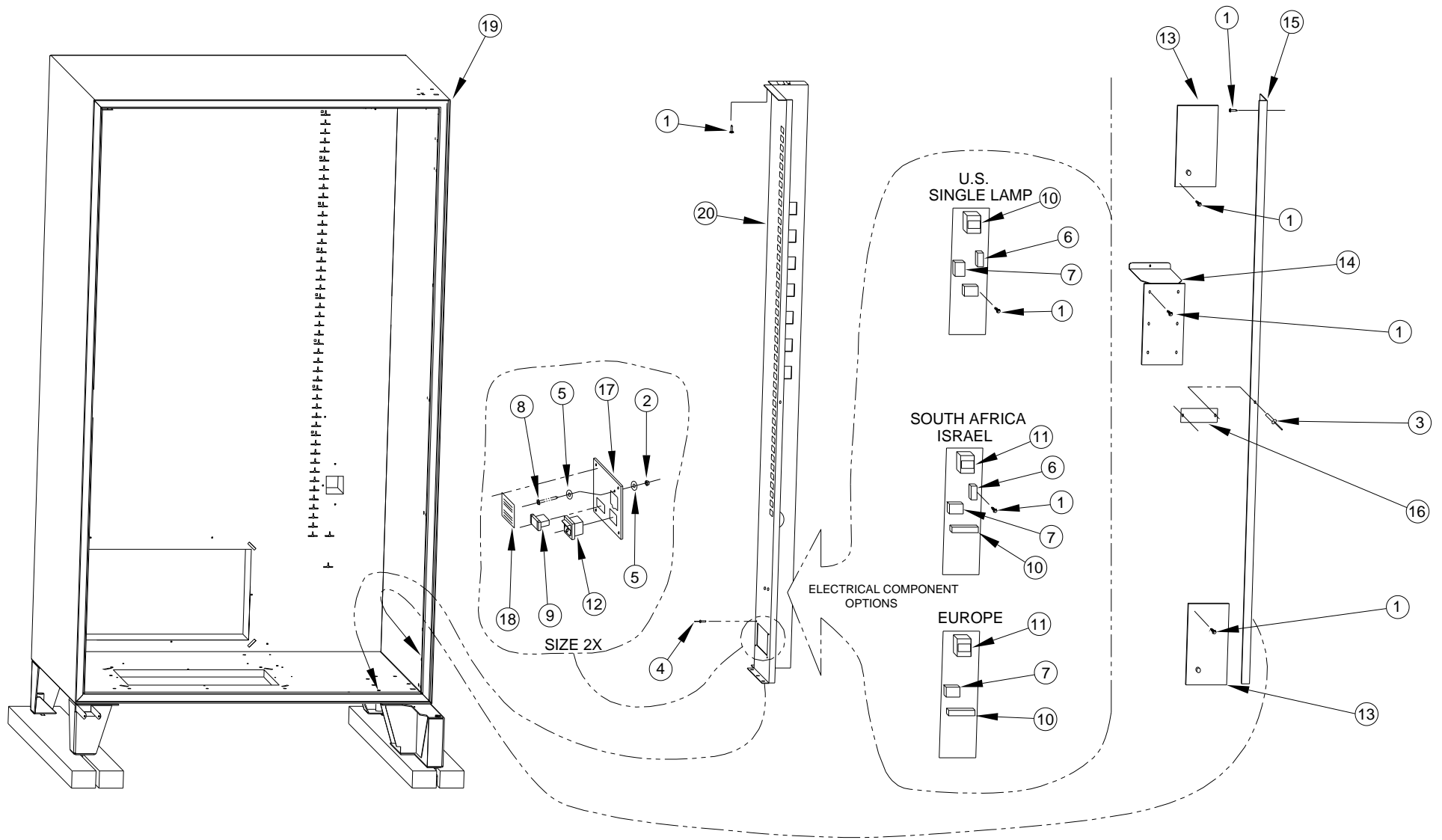
CABINET LEFT SIDE AND CENTER PARTS LIST

ITEM	PART NO.	PART NAME	QTY.	NOTES
1	3000	Sheet Metal Screw TEK #8-18	54	
2	3007-06	Screw, 5/16-18, Type F	16	4 Per Leg
3	3009-04	Rivet, Steel, 1/8", 1/4" Grip, Blk	4	
4	3009-02	Steel Rivet, 3/8" Grip Length 1/4"	1	
5	3010	Nut, Square, Machine	1	
6	3017-10	Washer, #10 SAE Flat	2	For Door Stop Cable (2 Places)
7	3018-06	Screw, Sheet Metal, TEK-8-18	3	For Lock Assembly
8	3029-02	Bushing, Open/Closed	1	
9	3060-10	Nut, 10-32, w/Nylon Insert	2	For Door Stop Cable (2 Places)
10	3061-06	Screw, 10-32 x 3/4 Phillips Pan Head	2	For Door Stop Cable (2 Places)
11	3067	Spacer, .192 ID x .125 Length x 3/8 Dia.	2	For Door Stop Cable (2 Places)
12	3080	Strain Relief, Button Lock	1	
13	3081	Wire Tie, 0.250 Panel Mount	1	
14	3113	Push Nut, 3/16" Stud	1	
15	20019	Leg, Roller Bracket	1	
16	20121	Leveling Leg	5	Cabinet To Be Leveled Using All Legs
17	20135	Lock, Flange	1	
18	20136	Lock, Cage	1	
19	20177	Roller, Molded (Nylon)	1	
20	20227	Cable Assembly, Door Stop, Modified	1	
21	20291	Cover Plate, Hinge Hole, Ver. 2	1	For Top Hinge
22	20481	Extension, Left Vertical Rail Mount	1	
23	21122	Assembly, Leg, Left Front with Thread Covers	1	
24	21123	Assembly, Leg, Front Hinge With Thread Covers	1	
25	21124	Assembly Leg, Rear with Thread Covers	2	
26	21250	Shaft, Headed Roller (Zinc Plated)	1	
27	21839	Rail Mount, Left Vertical Ver. 2	1	

ITEM	PART NO.	PART NAME	QTY.	NOTES
28	21989	Assembly, Cabinet, (35")	1	Contact AMS for your application
	22071	Assembly, Cabinet, (39")	1	
29	23231	Shipping Board	2	40" Long, Not Treated, (DOM)
	23231-02	Shipping Board		38-3/8" Long, Not Treated, (DOM)
	23231-01	Shipping Board		40" Long, Treated (ISPM 15), (EXPORT)
	23231-03	Shipping Board		38-3/8" Long, Treated (ISPM 15), (EXPORT)
30	23305	Assembly, Low Temp/Snack Cabinet Lock	1	
31	3827	Power Entry Module, 230V	1	Europe Only
32	25464	Plate, Power Entry Module, CE	1	Europe Only
33	25741	Sheet Metal Screw TEK #8-18	54	
34	25742	Liner, Power Cord Exit	1	
35	25790	Cover, Wire Bushing	1	
36	25791	Sheet Metal Screw, 1/4"	3	For Lock Assembly

THIS PAGE INTENTIONALLY LEFT BLANK

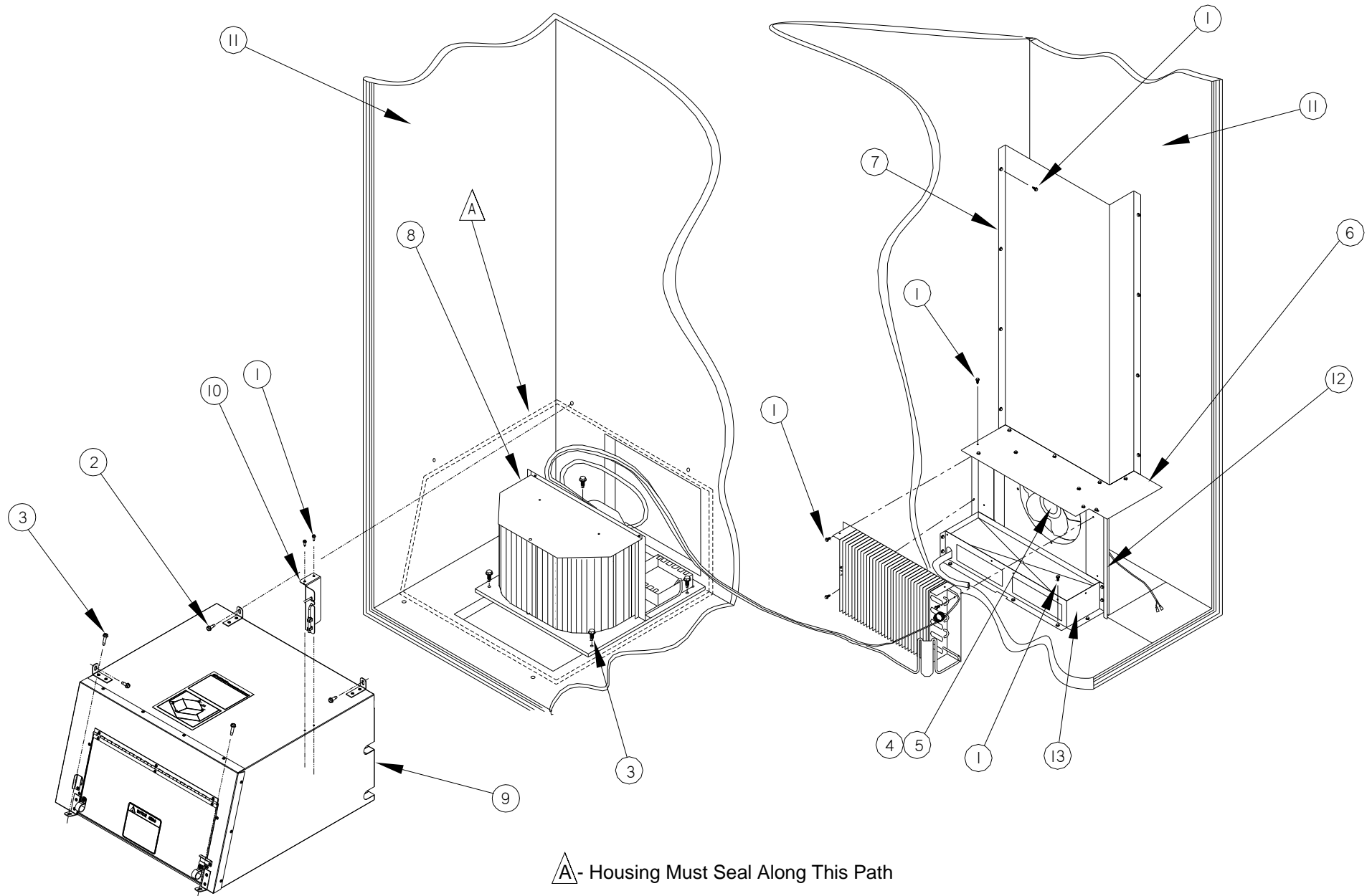
CABINET RIGHT SIDE ILLUSTRATION



CABINET RIGHT SIDE PARTS LIST

ITEM	PART NO.	PART NAME	QTY.	NOTES
1	3000	Sheet Metal Screw TEK #8-18	54	
2	3006-08	Nut, 8-32, Hex, Machine Screw	1	For Attaching Power Harness
3	3009-02	Rivet, Pop, Steel, 1/8 x 1/4 Grip Length	2	
4	3009-04	Rivet, Pop, Steel, 1/8 x 3/8" Grip Length	4	For Attaching 21479
5	3017-10	Washer, #10 SAE Flat	2	For Power Harness
6	3030	Filter, RFI	1	For Filtering Electrical Noise.
7	3274	Relay, Refrigeration, Single Pole	1	For 24V Control of Optional Chiller
8	3084-10	Screw, Sems, 8-32	1	For Power Harness
9	3133-30	Assembly, Fuse Holder With Fuses	1	Use P/N 3097 3AG Fast Blow Fuse Only
10	3257	Transformer, Class II, 120V / 24V	1	For Power
11	3258	Transformer, CE, 230V / 24V	1	For Power
12	3284	Switch, Rocker, On/Off	1	For 24VAC Circuit Control
13	20207	Cover Plate, Column, Fixed	2	
14	20211	Cover Plate, Transformer	1	
15	20213	Flange, Right Vertical	1	
16	21053	Stiffener, Right Vertical Rail Mount	1	
17	21479	Plate, Fuse Holder, Socket And Power Switch Mount	1	Attached Inside of Rail Mount
18	21509	Decal, 24V Fuse, Ver. 2	1	
19	23305	Assembly, Cabinet, (35")	1	Contact AMS for your application
	22071	Assembly, Cabinet, (39")		
20	23724	Rail Mount, Right Vertical, Snack, (35")	1	
	21476	Rail Mount, Right Vertical, Snack, (39")		

CHILLER ILLUSTRATION—ANGLED VIEW



A - Housing Must Seal Along This Path

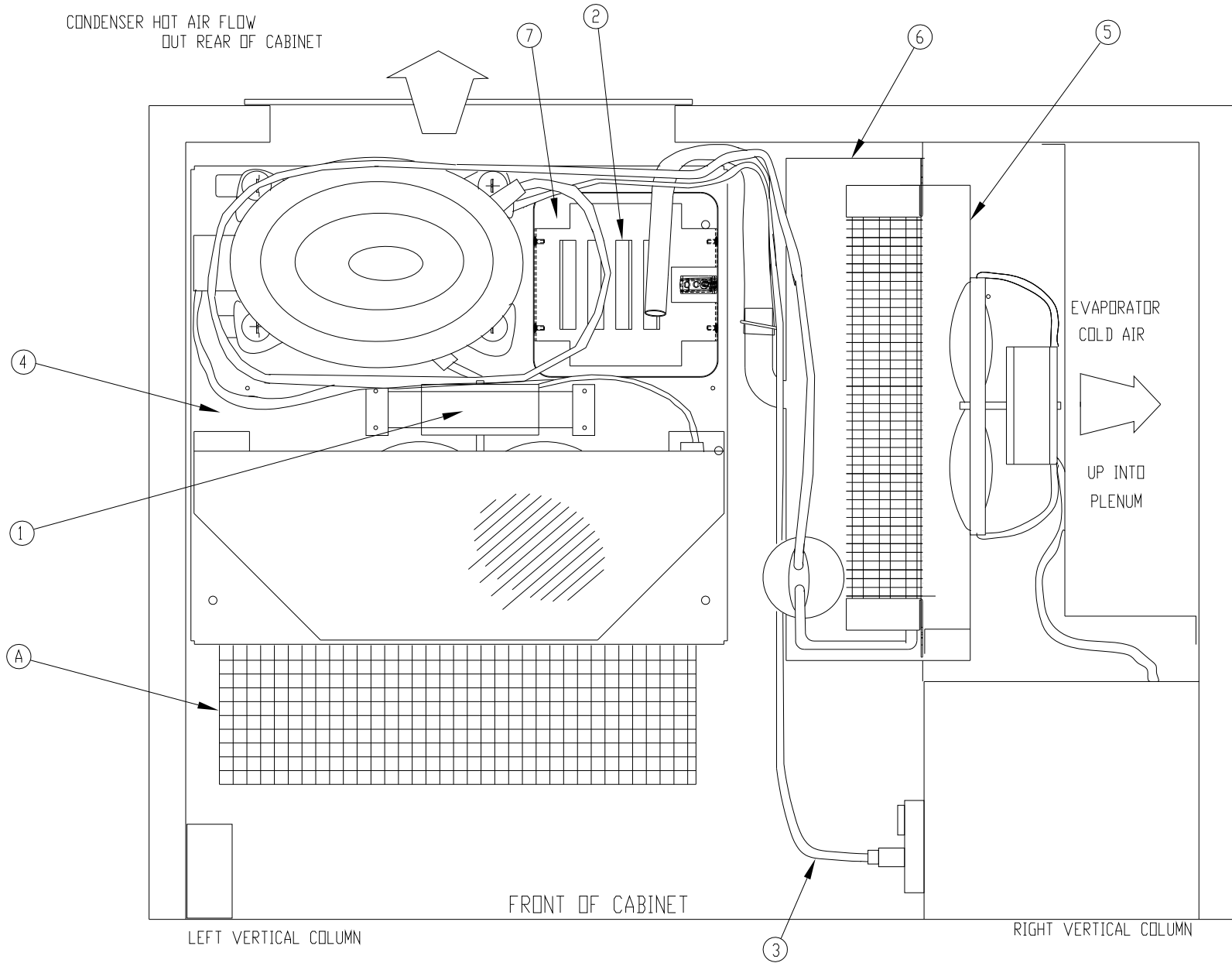
CHILLER PARTS LIST - ANGLED VIEW

ITEM	PART NO.	PART DESCRIPTION	QTY.	NOTES
1	3000	Sheet Metal Screw TEK #8-18	46	
2	3018-06	Screws, ¼ x ¾, Self Tapping, Hex Head	2	For Attaching To Tank Walls
3	3018-08	Screws, ¼ x 1, Self Tapping, Hex Head	6	For Attaching To Tank Floor
4	3106	Evaporator Fan/Motor Assembly, 220V, 50Hz, 1 Phase	1	Note Voltage!
5	3107	Evaporator Fan/Motor Assembly, 110V, 60Hz, 1 Phase		
6	21987	Evaporator Cover Plate (35")	1	
	20316	Evaporator Cover Plate (39")		
7	20317	Evaporator Plenum	1	
8	22889	Assembly, 1/4, Chiller, 120V	1	Housing Must Seal Against Cabinet As Shown
	26003	Modular Unit CC 9		
	22928	Assembly, 1/4, Chiller, 220V		
9	23219	Assembly, Chiller Housing, English (39")	1	Housing Must Seal Against Cabinet As Shown Supplied with access Door
	23219-01	Assembly, Chiller Housing, Spanish (39")		
	23304	Assembly, Chiller Housing, English (35")		Housing Must Seal Against Cabinet As Shown
	23304-01	Assembly, Chiller Housing, Spanish (35")		
10	21424	Bracket, Temperature Sensor	1	
11	23305	Assembly, Cabinet, (35")	1	Contact AMS For Your Application
	22071	Assembly, Cabinet, (39")		
12	21991	Evaporator Mounting Panel, Stamped Drain Pan	1	For Stamped Pan Assemblies
13	21992	Assembly, Stamped Evaporator Drain Pan	1	Use with 21991, Evaporator Mounting Panel

NOTE: Chiller assemblies are charged with refrigerant and are replaceable only as an assembly. The refrigeration system is pressurized and sealed at the factory. Puncturing or cutting any component in the system will cause refrigerant gas and liquid to be propelled out of the system, creating an immediate physical hazard. Use caution to avoid accidentally opening the refrigerant system. It should also be noted that releasing refrigerant to the atmosphere is a federal crime and is punishable by law. Any service work requiring the system to be opened must be performed by a licensed technician using certified recovery equipment. Unauthorized service to the sealed refrigerant system may void the warranty.

Ambient snack merchandisers have no chillers or chiller parts. Ventilated merchandisers have a forced air system without any chiller.

CHILLER ILLUSTRATION—TOP VIEW



A = BOTTOM AIR INLET SCREEN

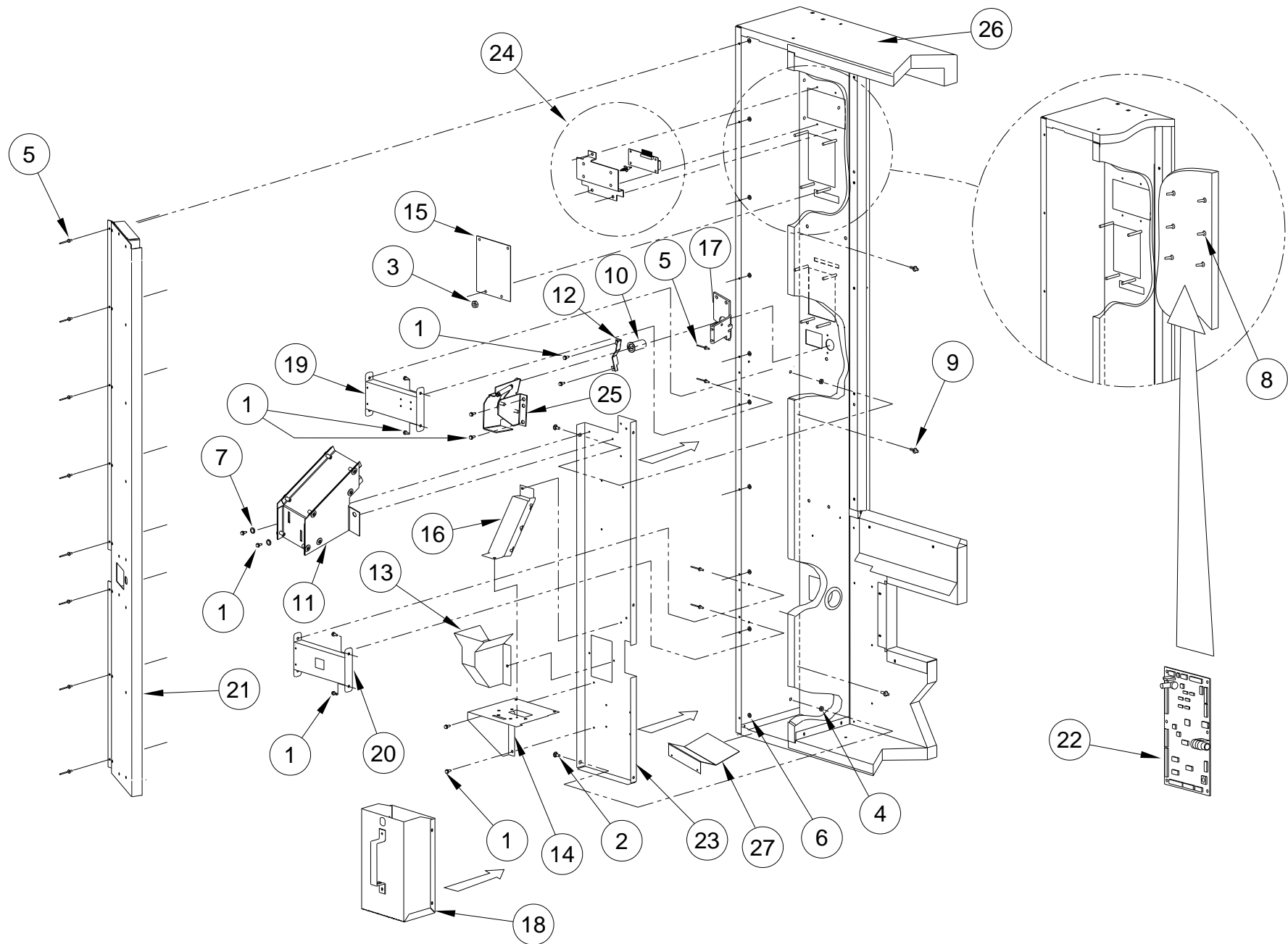
CHILLER TOP VIEW 35 & 39 12-12-13

CHILLER PARTS LIST - TOP VIEW

ITEM	PART NO.	PART DESCRIPTION	QTY.	NOTES (See Note A Below)
1	3065	Fan, Condenser Assembly, 220V, 50Hz, 1 Phase	1	Note Voltage!
	3108	Fan, Condenser Assembly, 110V, 60Hz, 1 Phase		Note Voltage!
	3819	EVAPORATOR FAN/MOTOR ASSEMBLY, (LB/LC MODELS), 115V, 50/60 Hz		
2	3093	Sponge (Condenser Drain Pan)	4	
3	20144	Refrigeration Harness	1	Use with Both 110V or 220V Systems
4	20531	Assembly, 1/4 H.P. Chiller, 240V, Ver. 2, AMS (WV)	1	See Note
	25633	Assembly, 1/4 H.P. Chiller, 120V, Ver. 2, AMS (WV)		
	24712	ASSEMBLY, MODULAR CHILLER, 115V (LB/LC MODELS)		
5	21991	Evaporator Mounting Panel, Stamped Drain Pan	1	Used with Stamped Pan Assemblies
6	21992	Assembly, Stamped Evaporator Drain Pan	1	Use with 21991, Evaporator Mounting Panel
7	27460	Condenser Drain Pan, Formed	1	Stamped Fabrication

NOTE A: Chiller assemblies are charged with refrigerant and are replaceable only as an assembly. The refrigeration system is pressurized and sealed at the factory. Puncturing or cutting any component in the system will cause refrigerant gas and liquid to be propelled out of the system, creating an immediate physical hazard. Use caution to avoid accidentally opening the refrigerant system. It should also be noted that releasing refrigerant to the atmosphere is a federal crime and is punishable by law. Any service work requiring the system to be opened must be performed by a licensed technician using certified recovery equipment. Unauthorized service to the sealed refrigerant system may void the warranty.

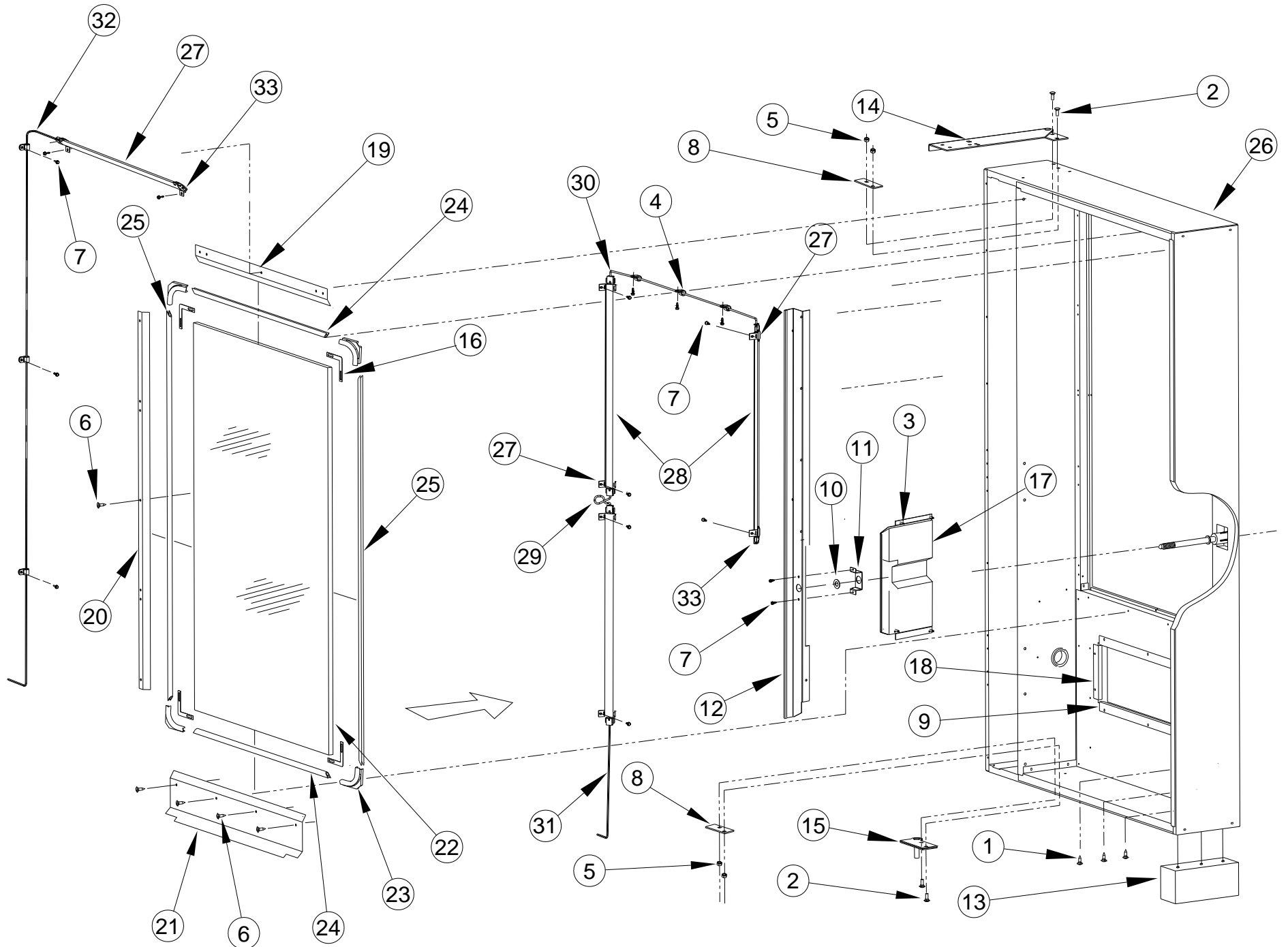
DOOR, COIN BAY ILLUSTRATION



DOOR, COIN BAY PARTS LIST

ITEM	PART NO.	PART NAME	QTY.	NOTES
1	3000	Screw, Sheet Metal TEK 8-18	18	
2	3005-04	Carriage Bolt, #10-24, 1/2"	5	
3	3006-08	Nut, Hex, Machine Screw, #8-32	8	4 per DBV Opening
4	3006-10	Nut, Hex, Machine Screw, #10-24	5	
5	3009-04	Rivet, Steel, 1/8", Black, Grip Length 1/4"	12	
6	3017-06	Washer, Flat Steel, SAE Std., #6 Screw 5/32	10	
7	3017-10	Washer, Flat Steel, SAE Std., #10 Screw 7/32 x 1/2	2	
8	3037-01	PC Board Support (3/16")	6	For Control Board
9	3038	Rivet, Nylon, Trim	2	Hold Door Closed
10	20081-01	Scavenger Button, Blk	1	
11	24631	Assy., Coin Chute, Upper	1	
12	24641	Scavenger Guide, Epoch	1	
13	23373-01	Assembly, Plastic Coin Cup	1	
14	24961	Coin Box Bulkhead	1	
15	20181	DBV Cover Plate	2	Flat Steel Plate, 1 per DBV Opening
16	24962	Assembly, Coin Chute, Lower	1	
17	24642	Bracket, Pushbutton Alignment, Epoch	1	
18	24613	Assembly, Coin Box	1	
19	20706	Door Stiffener, Upper, Without Fuse And Switch	1	Not Shown
	20709	Door Stiffener, Upper, Locking, w/o Fuse And Switch		
20	20707	Door Stiffener, Bottom With Switch	1	
21	20752	Assembly, Coin Door, Upper (51")	1	
22	26910	Control Board, Isolated LED Power	1	
23	24608	Mounting Panel, Changer, Multi-Use	1	
24	24739-03	Assembly, Display, Escutcheon (OLED)	1	Contains display board
25	24625	Assembly, Scavenger System, Ver. 3, ADA Escutcheon, Epoch	1	
26	25222	Assy., Foamed Door, Snack, Epoch (35")	1	Contact AMS for your application.
	25106	Assy., Foamed Door, Snack, Epoch-ADA (35")		
	25220	Assy., Foamed Door, Snack, Epoch (39")		
	25083	Assy., Foamed Door, Snack, Epoch-ADA (39")		
27	26484	Coin Box Retainer	1	

DOOR, HINGES, GLASS AND LIGHTING ILLUSTRATION



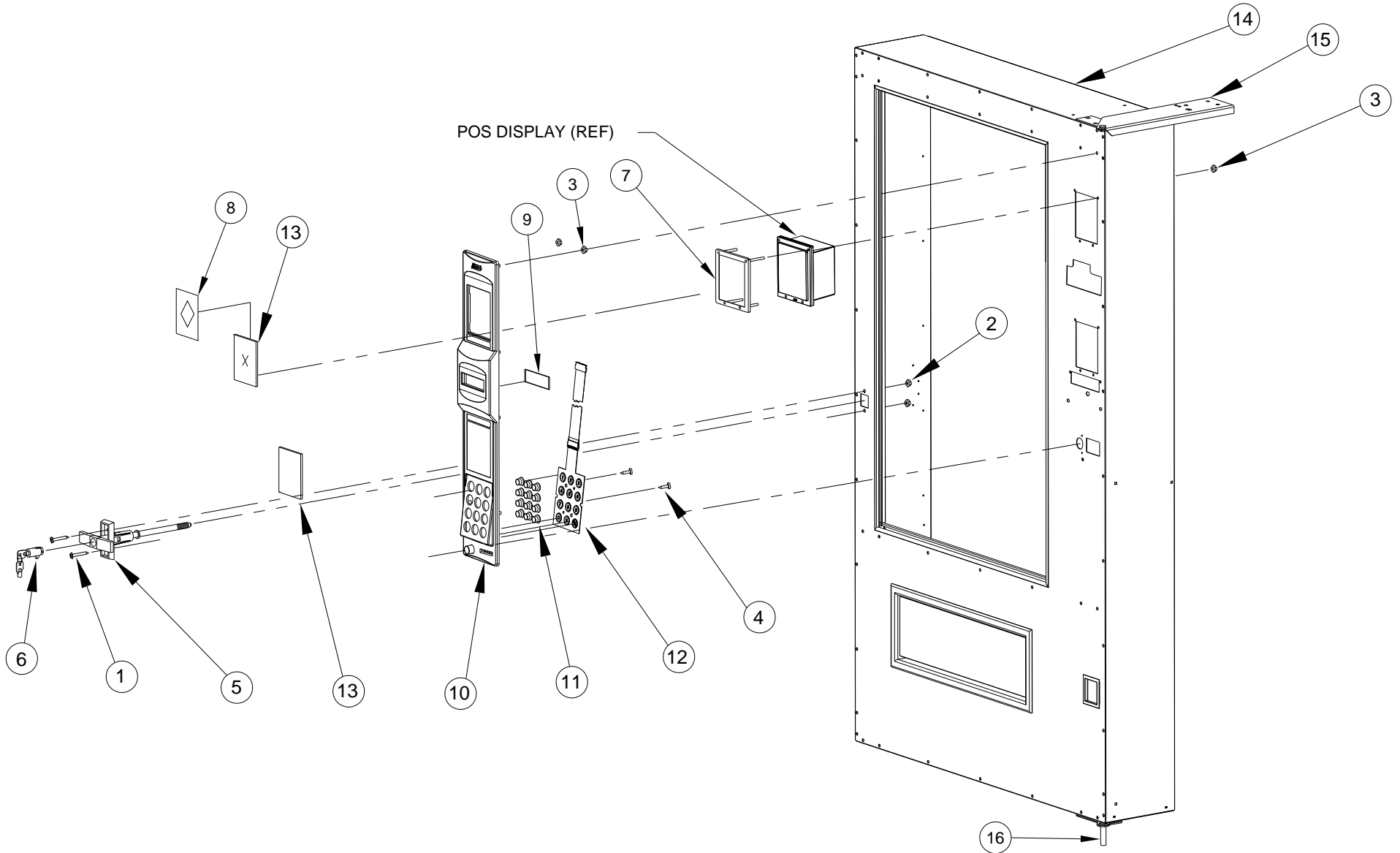
DOOR HINGES, LIGHTING AND GLASS PARTS LIST

ITEM	PART NO.	PART DESCRIPTION	NOTE
1	3000	Screw, TEK 8-18	
2	3004-06	Carriage Bolt, ¼-20, ¾"	
3	3009-02	Rivet, Pop, Steel, 1/8 Diameter	
4	3024-06	Cable Clamp, 3/8" Dia. Black Nylon	For Single or Dual
5	3153-11	Nut, Hex With Lock Washer	
6	3251-06	Screw, Sheet Metal, #12 X ¾" L Tek, Pan Head	For Glass Retainers
7	3342-04	Screw, Sheet Metal, Tek 8-18, Clear Zinc, ½" L	For Dual LED Option
8	20206	Hinge, Washer Plate	
9	20401	Retainer, Horizontal Eyelet	
10	20852	T-Handle Seal	
11	20857	Lock Bolt Bracket	
12	20965-01	Tray Restraint, Low Temp, Reduced Depth	
	25124	Tray Restraint, Low Temp, Reduced Depth ADA	
13	21166-01	Assembly Kit, False leg	
14	21703	Assembly, Top Hinge, 3/16"	
15	21704	Assembly, Bottom Hinge Bottom, 3/16"	
16	22036	Glass Retainer, Corner	
17	22068	Assembly, Lock Bolt Cover, L/T	
	25299	Assembly, Lock Bolt Cover, L/T 39" ADA	
18	22381	Retainer, Vertical Eyelet	
19	23656-01	Top Glass Retainer, (39")	
	24032-01	Top Glass Retainer, (35")	
20	23657-01	Vertical Glass Retainer (39")	
	24033-01	Vertical Glass Retainer, Epoch—ADA (39")	
	25288-01	Vertical Glass Retainer (35")	
21	23658-01	Retainer, 1" Dual Pane Glass, Bottom Deflector (39")	
	24034-01	Retainer, 1" Dual Pane Glass, Bottom Deflector (35")	

ITEM	PART NO.	PART DESCRIPTION	NOTE
22	24035	Window, Glass, 1" Dual Pane (39")	
	24036	Window, Glass, 1" Dual Pane (35")	
	25095	Window, Glass, 1" Dual Pane L/T (39"), Epoch—ADA	
23	24099	Corner, Window Trim	
24	24761-13	Extrusion, Glass Installation, Ver. 2, 16.91 (35")	Horizontal, Use with Glass
	24761-11	Extrusion, Glass Installation, Ver. 2, 22.38 (39")	
25	24761-14	Extrusion, Glass Installation, Ver. 2, 36.59 (35")	Vertical, Use with Glass
	24761-12	Extrusion, Glass Installation, Ver. 2, 37.68 (39")	
	24761-16	Extrusion, Glass Installation, Ver. 2, 31.68 (Epoch-ADA 39")	
26	25212-01	Assy, Foamed Door, Red, Low Temp PDD Epoch (35")	
	25212-03	Assy, Foamed Door, Gray, Low Temp PDD Epoch (35")	
	25909-01	Assy, Foamed Door, Red, Low Temp Epoch (39")	
	25909-03	Assy, Foamed Door, Gray, Low Temp Epoch (39")	
	25967	Assy, Foamed Door, Red, Low Temp Epoch (35")	
	26096-01	Assy, Foamed Door, Red, LT, Cov. Window, Lock Cover, Anti-Vandal Panel Epoch (35")	
	26096-03	Assy, Foamed Door, Gray, LT, Cov. Window, Lock Cover, Anti-Vandal Panel Epoch (35")	
	26749-01	Assy, Foamed Door, Red, w/ Hopper, LT, Epoch (39")	
	26749-03	Assy, Foamed Door, Gray, w/ Hopper, LT, Epoch (39")	

ITEM	PART NO.	PART DESCRIPTION	NOTE
27	26976	LED Clip, Ver. 2	For Dual LED Option
28	26989	LED Assembly, ETI 19"	For Single or Dual LED Option
29	26990-03	Harness, LED Connector Cable, 3"	For Dual LED Option
30	26990-32	Harness, LED Connector Cable, 32"	For Dual LED Option
31	26991-70	Harness, LED Connector Cable, 70"	
32	26991-112	Harness, LED Connector Cable, 112"	
33	30044	Receptacle, Connector/PCB Housing, Nylon, Ellenby Lighting	

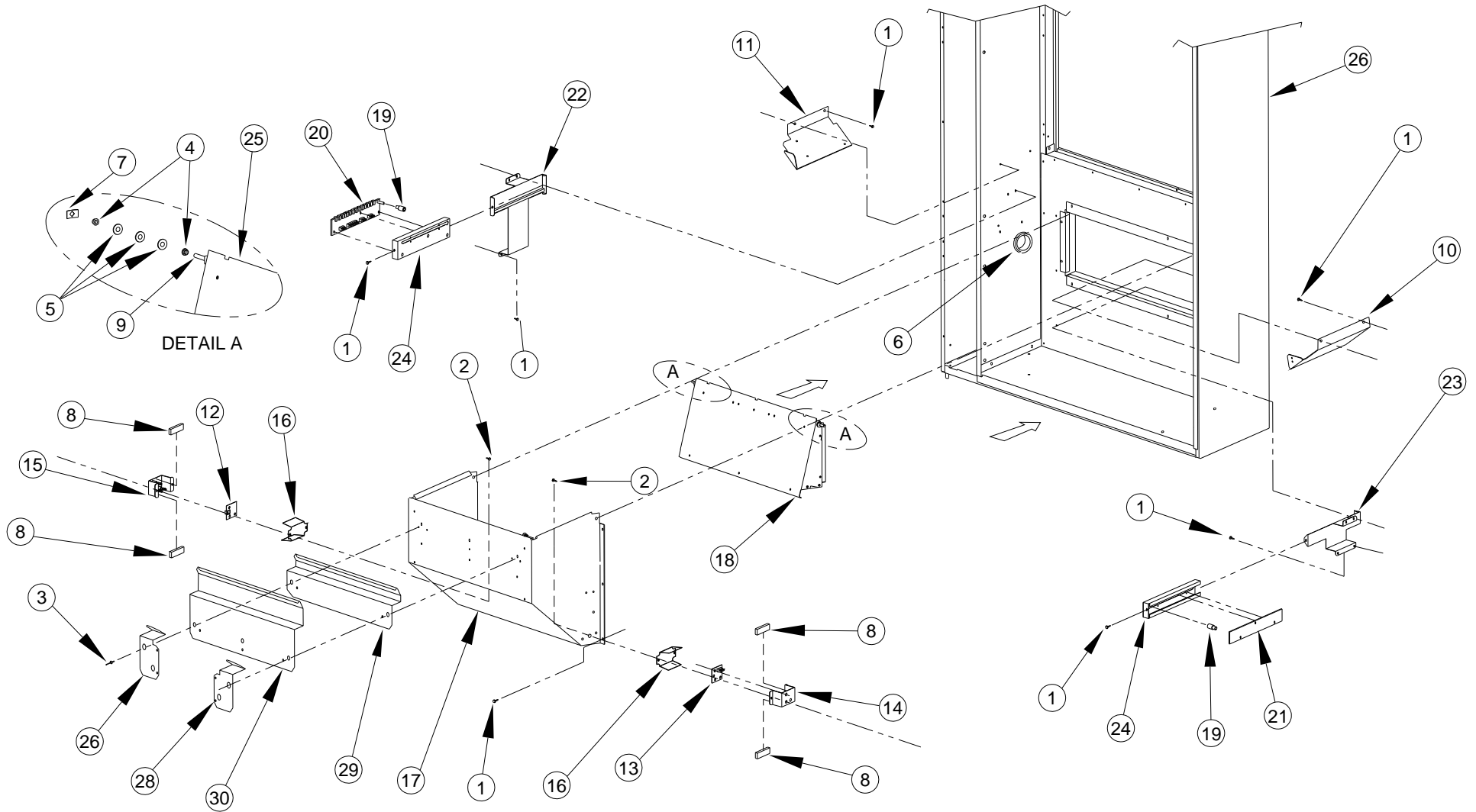
DOOR, EXTERNAL PARTS ILLUSTRATION



DOOR, EXTERNAL PARTS LIST

ITEM	PART NO.	PART NAME	QTY.	NOTES
1	3005-04	Carriage Bolt, #10-24, 1/2" Long	2	For Securing T-handle
2	3006-10	Nut, Hex, Machine Screw, #10-24	2	For Securing T-handle
3	3011	Self Threading Nut, 1/4" Stud	8	For Securing Escutcheon
4	3289-02	Screw, Type B, #8, Pan Head, Phillips #2	2	For Securing Keypad
5	20130	T-Lock Assembly	1	
6	20131	Lockset And Keys	1	Contact AMS for your application
7	20344	Assembly, DBV Mounting Bezel	2	
8	23930	Decal, Guaranteed Delivery	1	Optional Item
9	22175	Lens, Escutcheon, GFM, Ver. 2	1	
10	24616	Escutcheon, Plastic, Epoch	1	
—	24623	Escutcheon/Keypad Assy		Includes Escutcheon, Lighted Keypad & Buttons and Display Lens
11	22177	Button, 0.90" Dia. Round, Escutcheon	12	12 Key Escutcheon
12	25688	Assembly, Lighted Keypad	1	12 Key Escutcheon
13	22184-01	DBV Cover Panel, Gray	2	Optional Item
14	25222	Assy., Foamed Door, Snack, Epoch (35")	1	Contact AMS for your application.
	25106	Assy., Foamed Door, Snack, Epoch-ADA (35")		
	25220	Assy., Foamed Door, Snack, Epoch (39")		
	25083	Assy., Foamed Door, Snack, Epoch-ADA (39")		
15	21703	Assy., Top Hinge, 3/16"	1	
16	21704	Assy., Bottom Hinge, 3/16"	1	

DOOR, SENSOR SYSTEM AND HOPPER ILLUSTRATION



DOOR, SENSOR SYSTEM AND HOPPER PARTS LIST

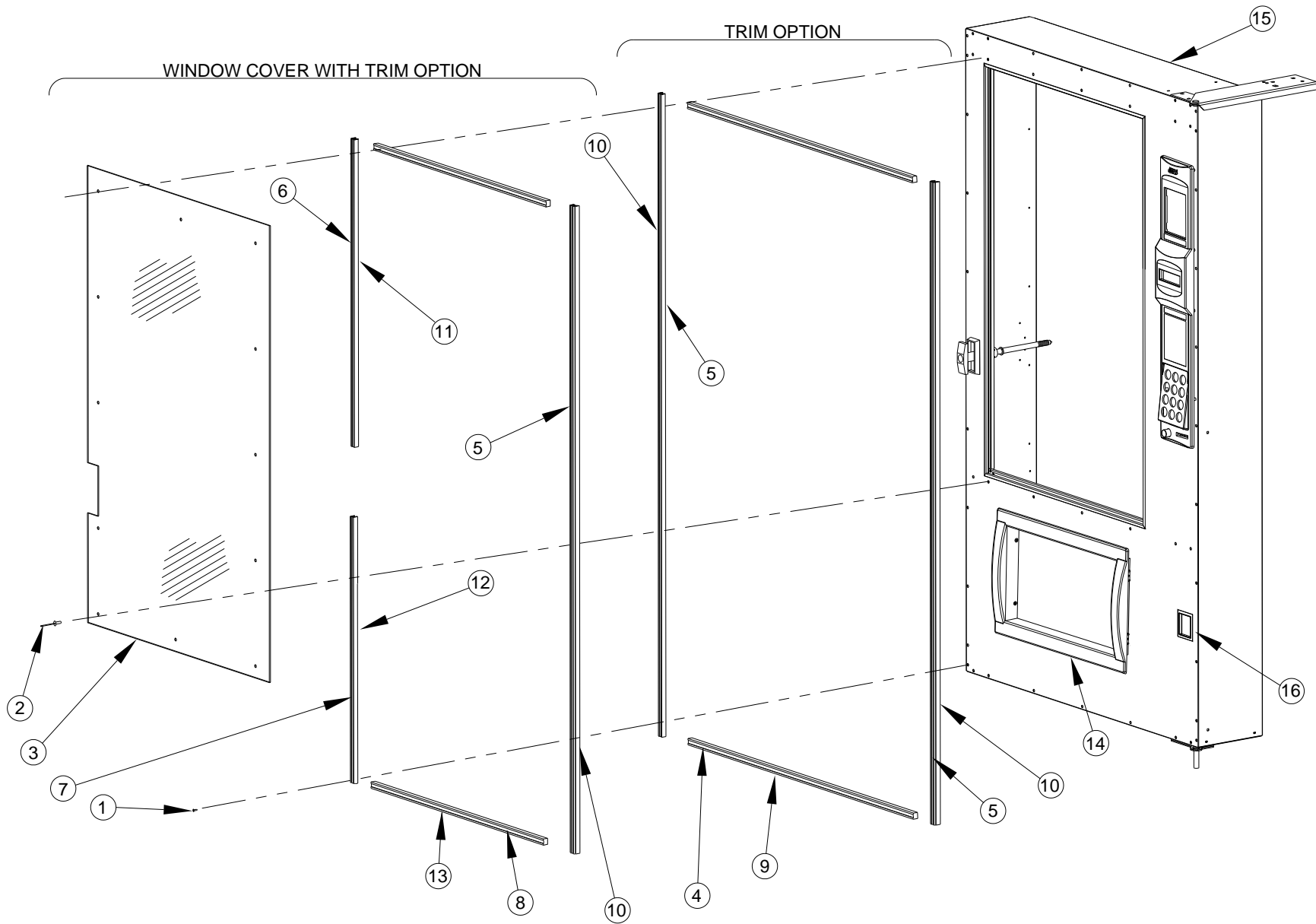
ITEM	PART NO.	PART DESCRIPTION	QTY.	NOTES
1	3000	Screw, TEK 8-18	24	
2	3002-04	Screw, Machine, Type F, 8-32	4	¾" Long, Self-Tap, Phillips, Round Head
3	3009-04	Rivet, Pop, Steel, 1/8 x 1/4 Grip	8	
4	3015	Bearing, Nyliner Snap-In	4	
5	3017-10	Washer, Flat Steel, SAE Std. , #10 Screw 7/32 X ½	6	
6	3025-24	Grommet, 1-1/2"	1	Harness Pass-Through
7	3113	Pushnut, 3/16" Stud	2	
8	3237	Tape, 3/8" X 1/4" Urethane Foam	4	1-5/8" Long Each Piece
9	20409	Vend Door, Shaft (35")	1	
	20108	Vend Door, Shaft (39")	1	
10	21460	Product Kicker, Left w/out flange	1	(Left Hand When Facing Front Of Vendor)
	21457	Product Kicker, Left		
11	21461	Product Kicker Right w/out flange	1	(Right Hand When Facing Front Of Vendor)
	21458	Product Kicker Right		
12	21385	Detector, Product Sensor	1	
13	21386	Emitter, Product Sensor	1	
14	21442	Assembly, Product Sensor Emitter Bracket	1	
15	21443	Assembly, Product Sensor Detector Bracket	1	
16	21798	Lens, Product Sensor Bracket	2	
17	22262	Assembly, Vend Hopper, (35")	1	
	22384	Assembly, Vend Hopper, 1.5 CU. FT. Hopper (39")		
18	22263	Assembly, Vend Door, Snack (35")	1	
	22204	Assembly, Vend Door, Snack, 1.5 CU. FT. Hopper (39")		
19	26051	Black Spacer		
20	26520	Sensor Board, Primary, Ver. 5	1	Add (1) Sensor Extension 26051
21	26521	Sensor Board, Secondary, Ver. 5	1	Add (1) Sensor Extension 26051
22	24970	Assembly, Primary Delivery Sensor Bracket, Epoch	1	
22	22126	Assembly, Secondary Delivery Sensor Bracket	1	
24	22128	Assembly, Secondary Delivery Sensor Cover	1	
25	22130	Assembly, Primary Delivery Sensor Cover	1	

ITEM	PART NO.	PART DESCRIPTION	QTY.	NOTES
26	25212	Assy., Foamed Door, L/T, Epoch (35")	1	Contact AMS for your application
	25203	Assy., Foamed Door, L/T, Epoch (39")		
	25244	Assy., Foamed Door, L/T, Epoch-ADA (39")		
27	22387	Deflector Plate, 1.5" Helix Tray, RH (39" Only)	1	Rivet to Hopper
28	22387-01	Deflector Plate, 1.5" Helix Tray, LH (39" Only)	1	
29	22388	Deflector Plate, 2.25" Height, 1-1/8 CU. FT. Hopper (35")	1	Rivet to Hopper
	22390	Deflector Plate, 2.25" Height, 1.5 CU. FT. Hopper (39")		
30	22389	Deflector Plate, 2.71" Height, 1-1/8 CU. FT. Hopper (35")	1	Rivet to Hopper
	22386	Deflector Plate, 2.71" Height, 1.5 CU. FT. Hopper (39")		

NOTE: The product sensor option may not have been contracted for nor installed on your vendor.

THIS PAGE INTENTIONALLY LEFT BLANK

DOOR WITH OPTIONAL TRIM AND FINISH PARTS ILLUSTRATION

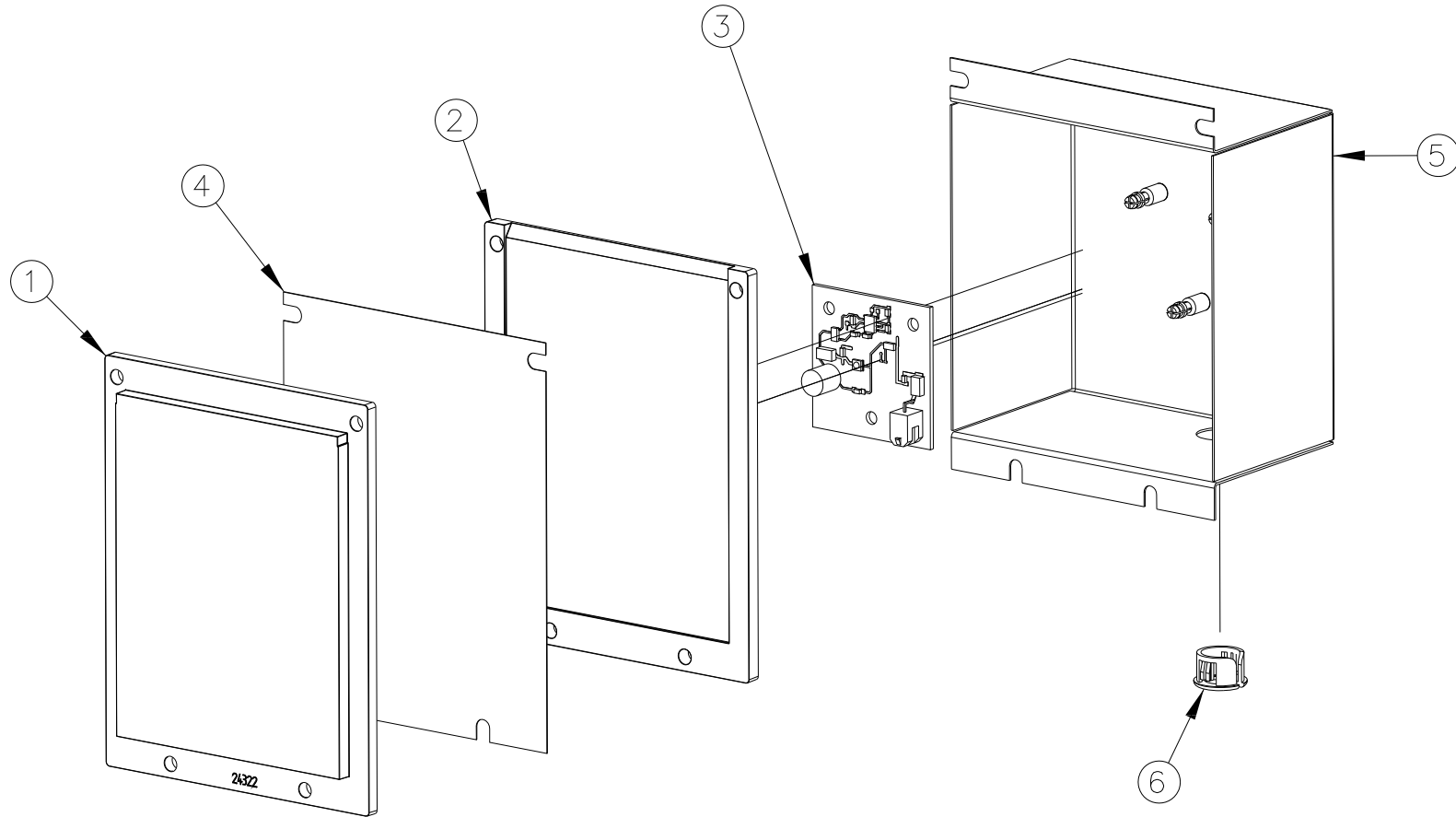


DOOR WITH OPTIONAL TRIM AND FINISH PARTS LIST

ITEM	PART NO.	PART NAME	QTY.	NOTES
1	3000	Screw, Sheet metal, TEK 8-18	28	For Securing Trim
2	3172-02	Rivet, Aluminum, ¼" Diameter, Natural (1/4" Grip)	15	For Securing Window Covers
3	-----	Window Cover, Polycarbonate (35"),	1	Contact AMS for your application
	-----	Window Cover, Polycarbonate (39"),		
4	21535-02	Trim, Plastic Insert, For Recessed Base (31.93") (35")	2	Snaps into Trim Base
	21535-01	Trim, Plastic Insert, For Recessed Base (37.25") (39")		
5	21535-03	Trim, Plastic Insert, For Recessed Base (65.38")	2	Snaps into Trim Base
6	21535-06	Trim, Plastic Insert, For Recessed Base (30.2")	1	Snaps into Trim Base
7	21535-07	Trim, Plastic Insert, For Recessed Base (29.4")	1	Snaps into Trim Base
8	21535-08	Trim, Plastic Insert, For Recessed Base (23.9") (35")	2	Snaps into Trim Base
	21535-15	Trim, Plastic Insert, For Recessed Base (29.68") (39")		
9	21612-02	Recessed Trim Base With Holes, Painted (35")	2	Black Paint Finish
	21612-01	Recessed Trim Base With Holes, Painted (39")		
10	21612-03	Recessed Trim Base With Holes, Painted	2	Black Paint Finish
11	21612-06	Recessed Trim Base With Holes, Painted	1	Black Paint Finish
12	21612-07	Recessed Trim Base With Holes, Painted	1	Black Paint Finish
13	21612-08	Recessed Trim Base With Holes, Painted (35")	2	Black Paint Finish
	21612-15	Recessed Trim Base With Holes, Painted (39")		
14	25080	Trim, Vend Eyelet	1	
15	25222	Assy., Foamed Door, Snack, Epoch (35")	1	Contact AMS for your application.
	25106	Assy., Foamed Door, Snack, Epoch-ADA (35")		
	25220	Assy., Foamed Door, Snack, Epoch (39")		
	25083	Assy., Foamed Door, Snack, Epoch-ADA (39")		
16	23372-01	Trim, Plastic Coin Cup	1	

NOTE: Trim Packages, Window Cover Packages and other options contracted for and installed at AMS may not apply to your vendor.

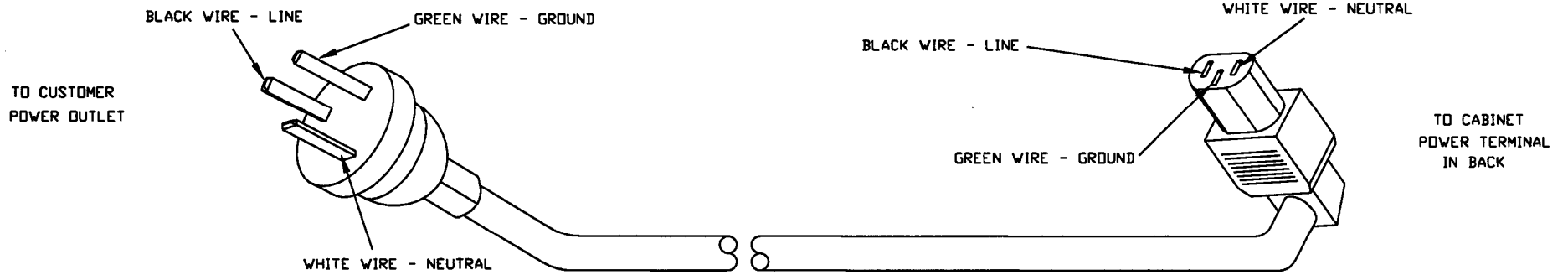
POS DISPLAY ILLUSTRATION



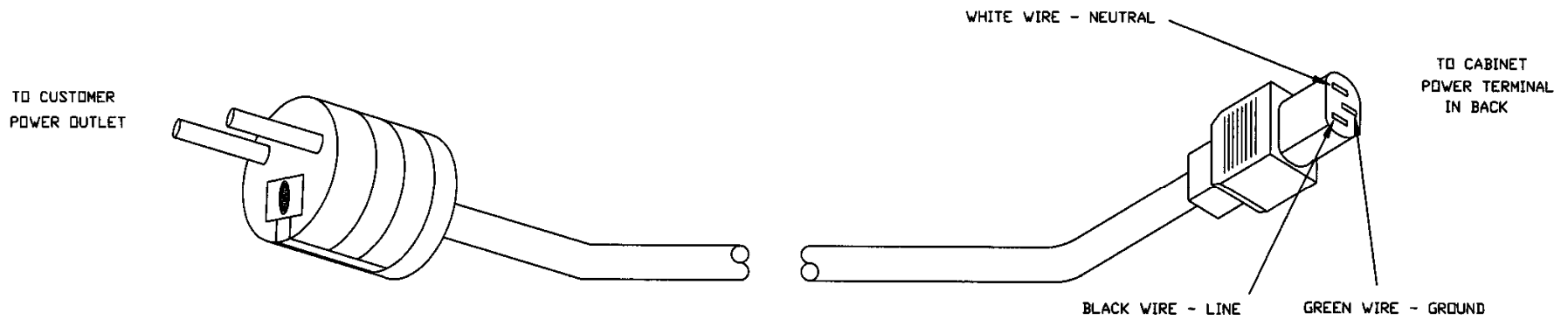
POS DISPLAY PARTS LIST

ITEM	PART NO.	PART DESCRIPTION	NOTES
1	24322	POS Display Insert	
2	24323	POS Display Diffuser	
3	24329	LED Board	
4	24767	POS Display Card (AMS)	English
	24768	POS Display Card (IAMS)	Spanish
5	24339	Light Box Assembly	
6	3029-02	Bushing	

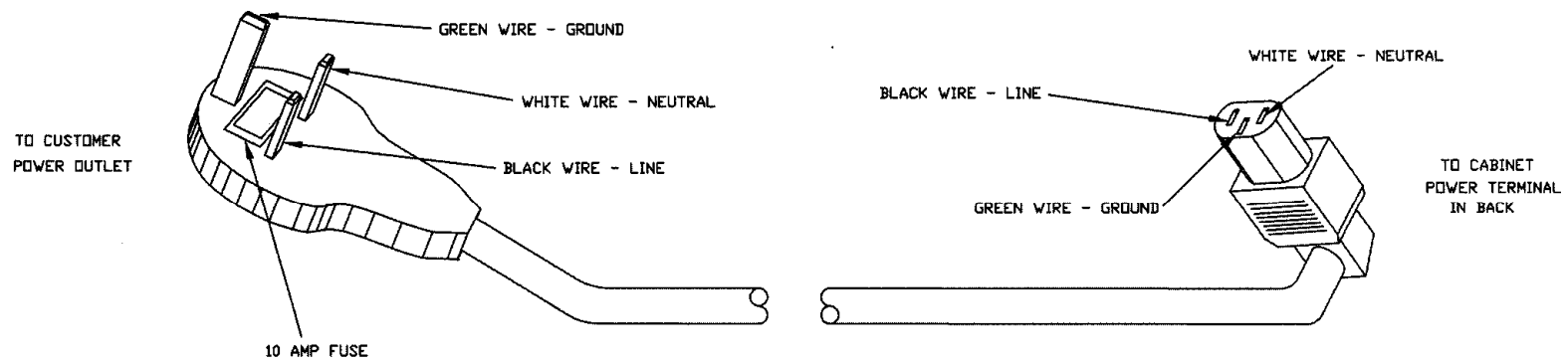
ELECTRICAL HARNESS ILLUSTRATIONS



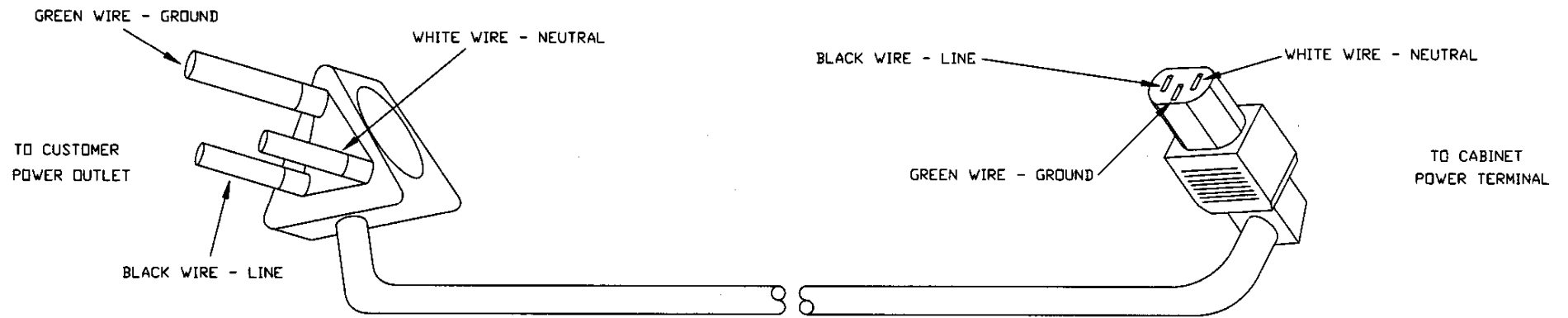
3173, POWER CORD, AUSTRALIA



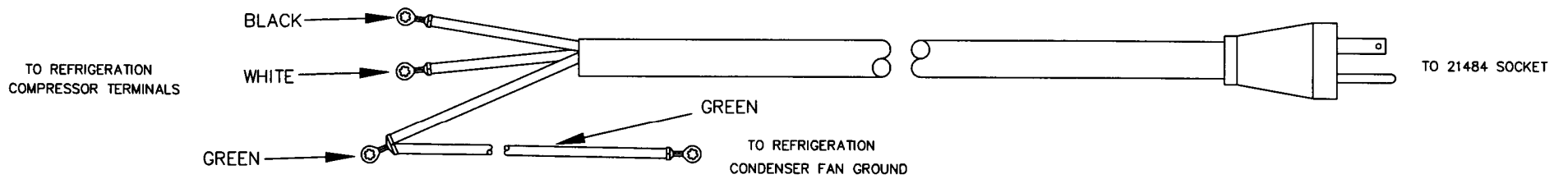
3193, POWER CORD, CONTINENTAL EUROPE



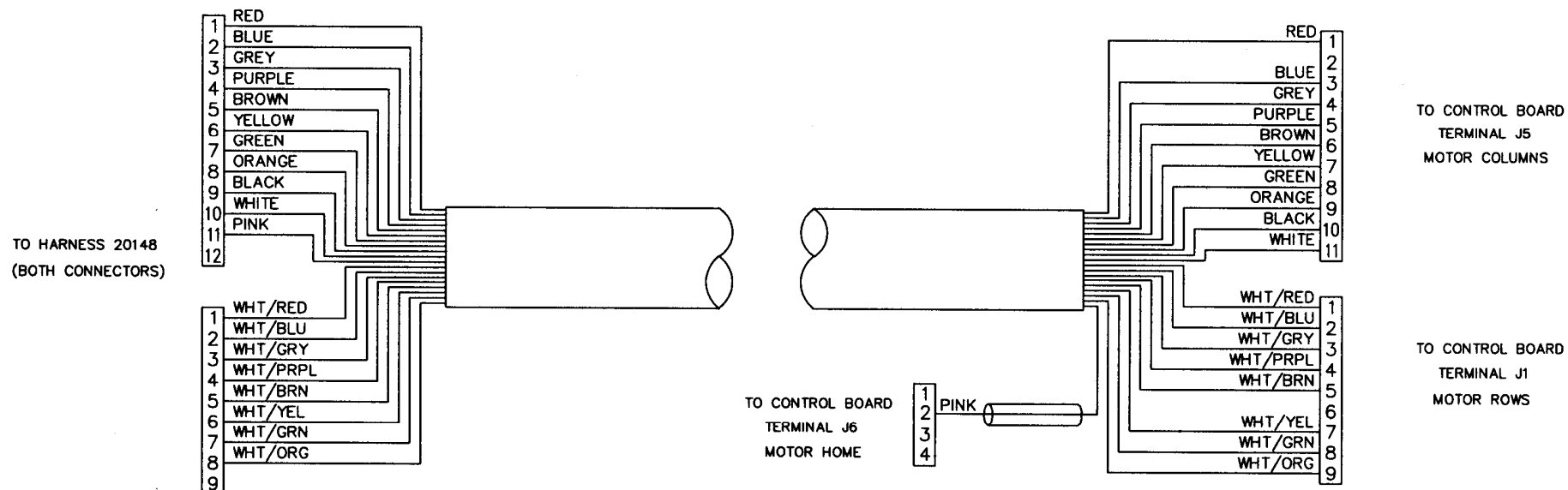
3194, POWER CORD, U.K. & IRELAND



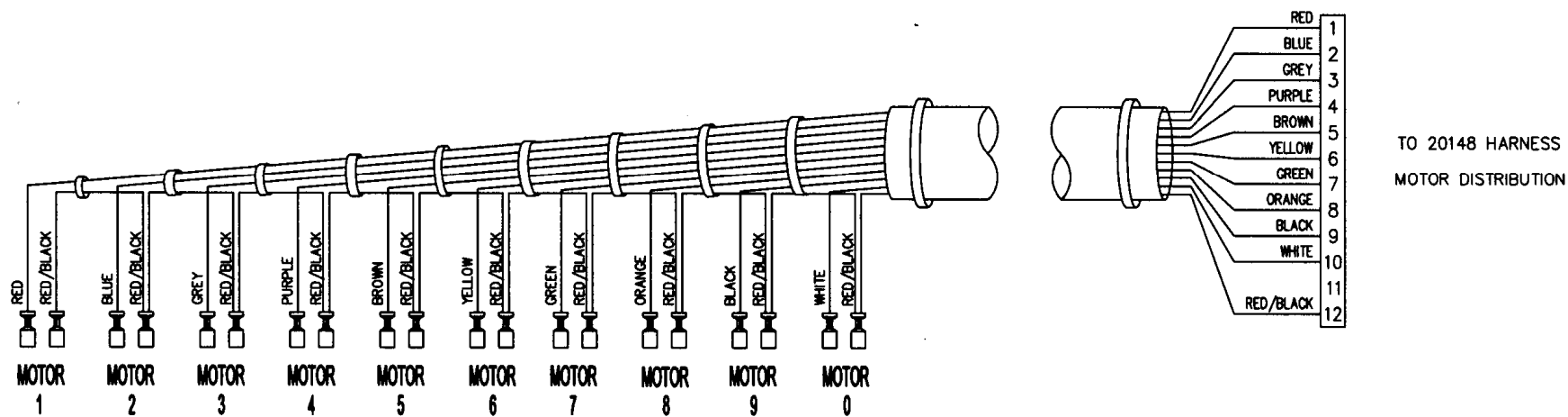
3208 POWER CORD, INDIA AND SOUTH AFRICA



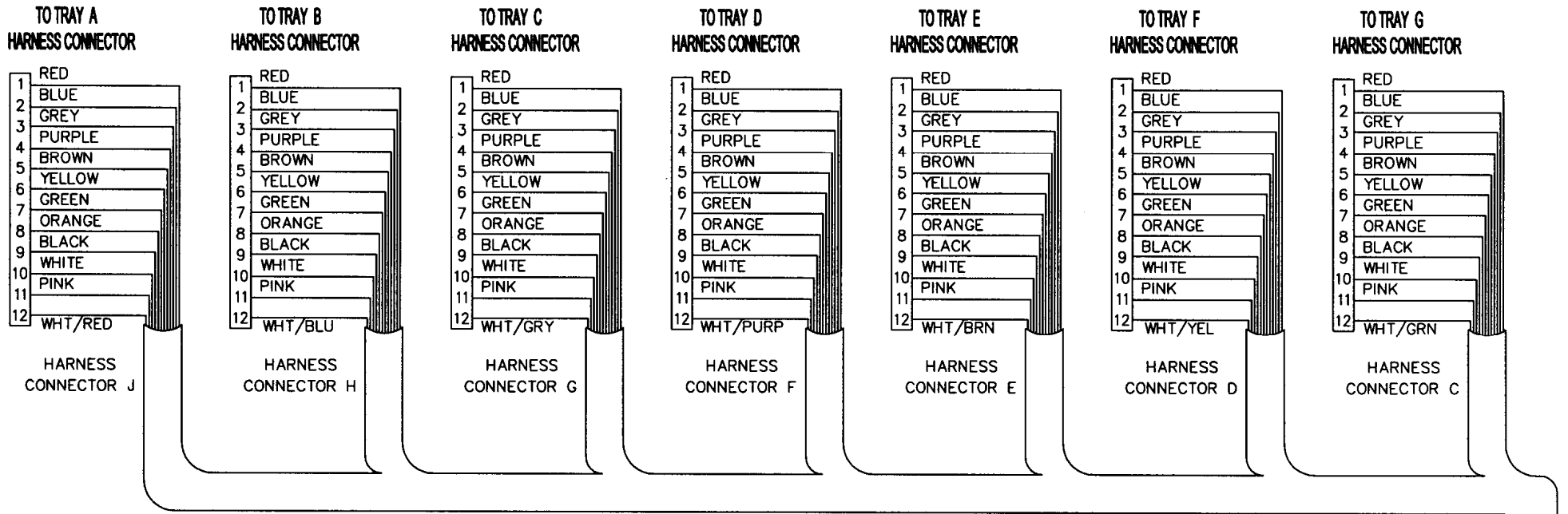
20144, HARNESS, REFRIGERATION



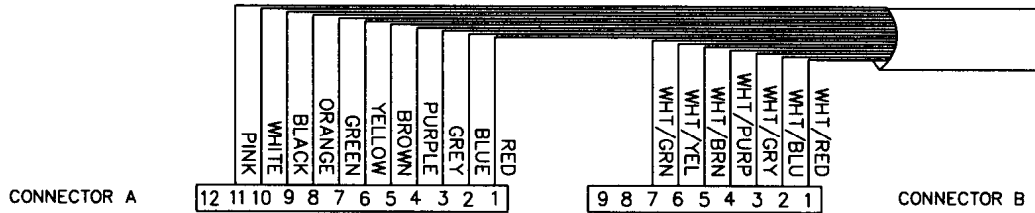
20146, HARNESS, DOOR MOTORS



20147, HARNESS, TRAY, 10 COLUMN

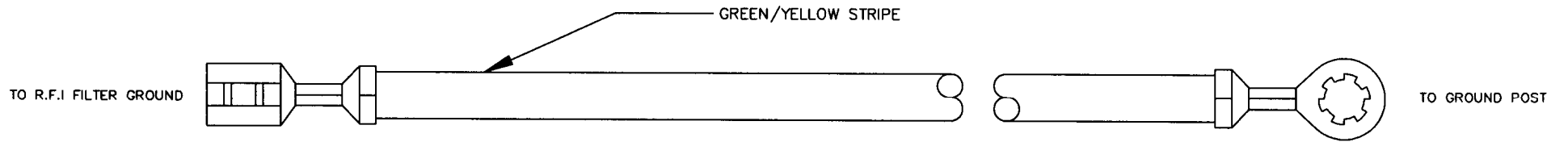


(CONNECTOR A IS JUMPERED TO ALL CONNECTORS TO TRAYS, PINS 1 -11)

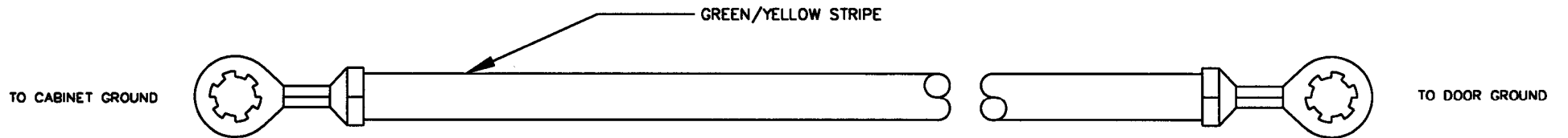


CONNECTOR A AND B TO 20146 HARNESS, DOOR MOTOR

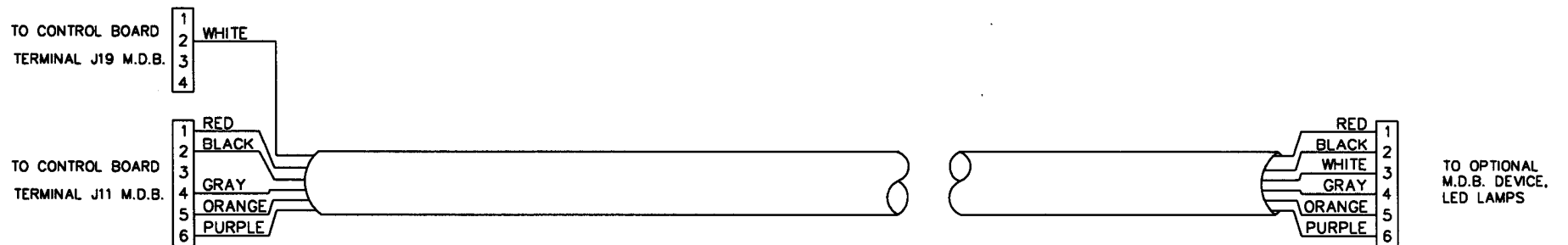
20148, HARNESS, MOTOR DISTRIBUTION



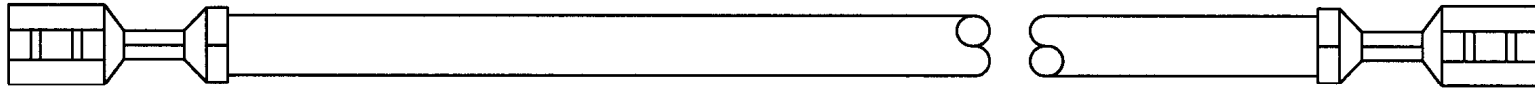
20154, HARNESS, R.F.I. FILTER GROUND



20156-01, HARNESS, GROUND

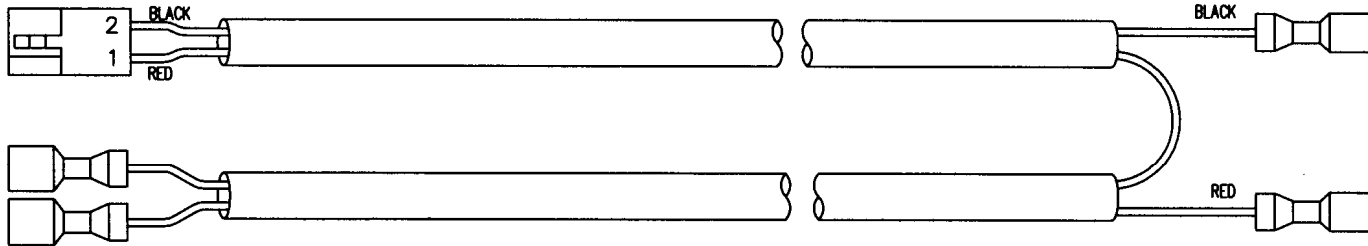


20158, HARNESS, MULTI-DROP BUS



20648 JUMPER WIRE, 18 AWG X 3', FEMALE / FEMALE

TO 21591 HARNESS, POWER
AND REFRIGERATION RELAY,
LEFT SIDE DOOR SWITCH

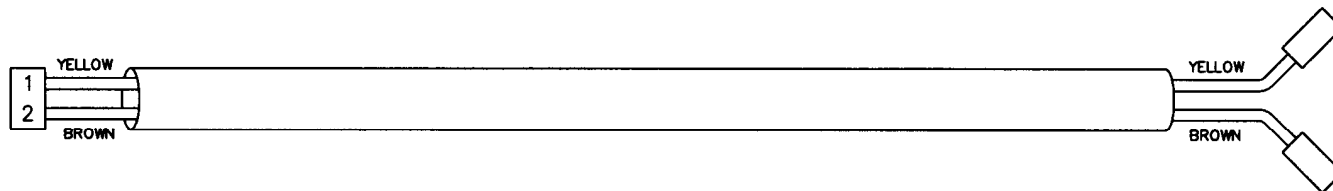


TO TRANSFORMER
24 VAC SECONDARY

TO FUSE HOLDER

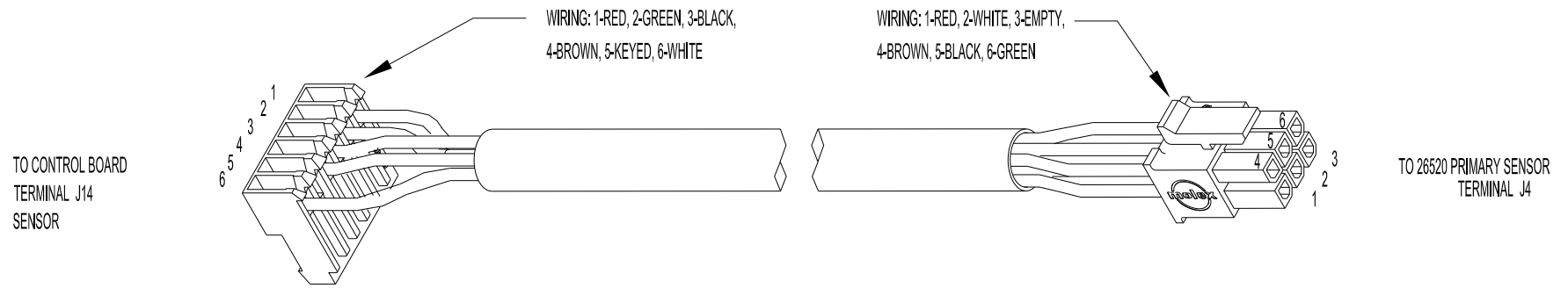
20701, HARNESS, TRANSFORMER AND FUSE

TO 21591, HARNESS,
CONTROL POWER AND
REFRIGERATION RELAY,
LEFT SIDE DOOR SWITCH

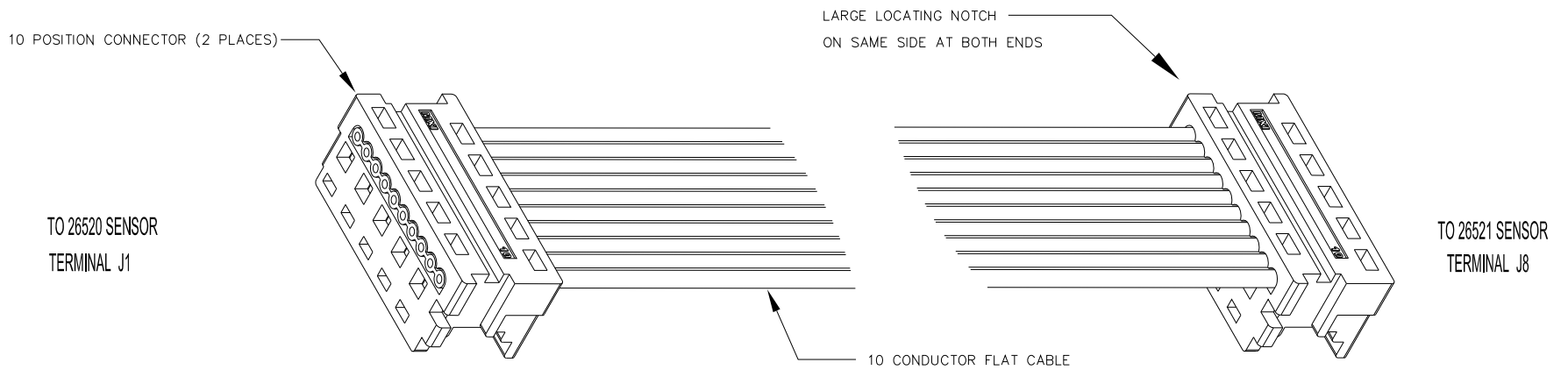


TO CHILLER RELAY
COIL SIDE

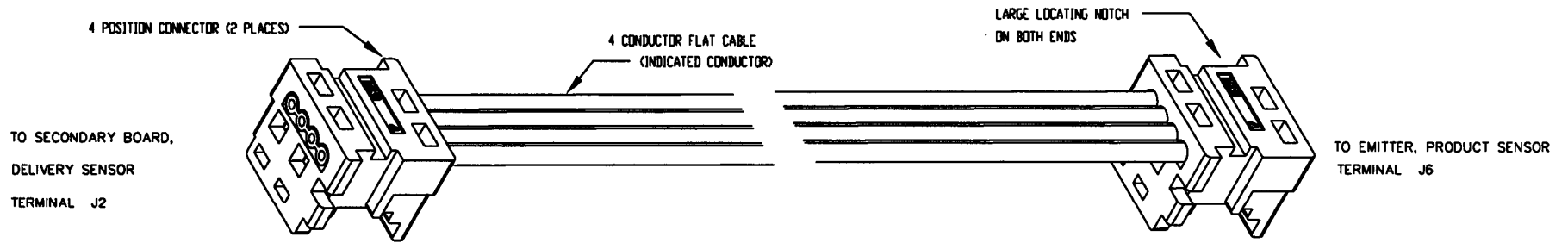
21405, HARNESS, REFRIGERATION RELAY, T9A SERIES



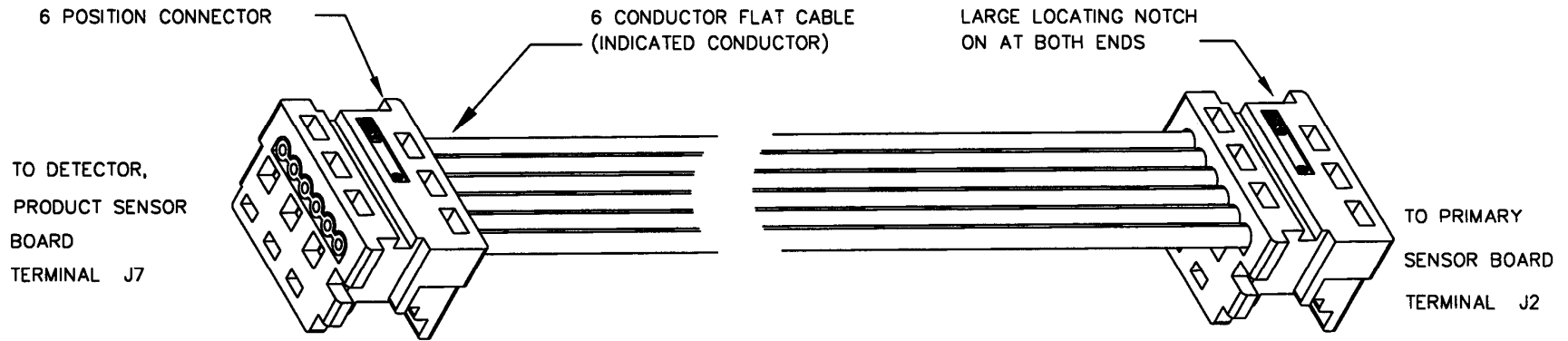
21425 HARNESS, DELIVERY SENSOR DETECTOR/CONTROL



21426 HARNESS, DELIVERY SENSOR DETECTOR/EMITTER



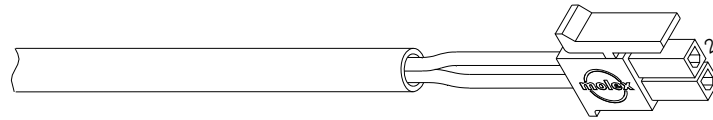
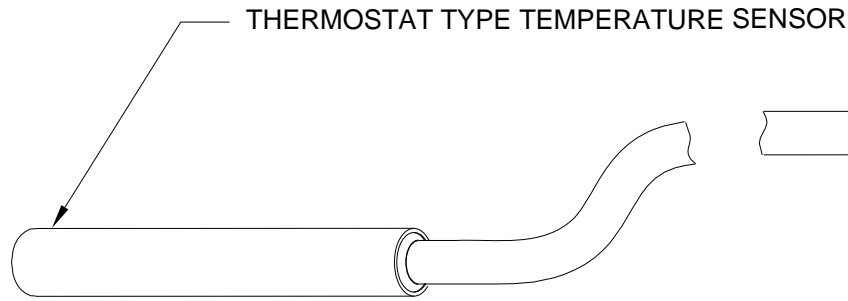
21427 HARNESS, PRODUCT SENSOR EMITTER, (OPTIONAL)



21428, HARNESS, PRODUCT SENSOR DETECTOR (OPTIONAL)

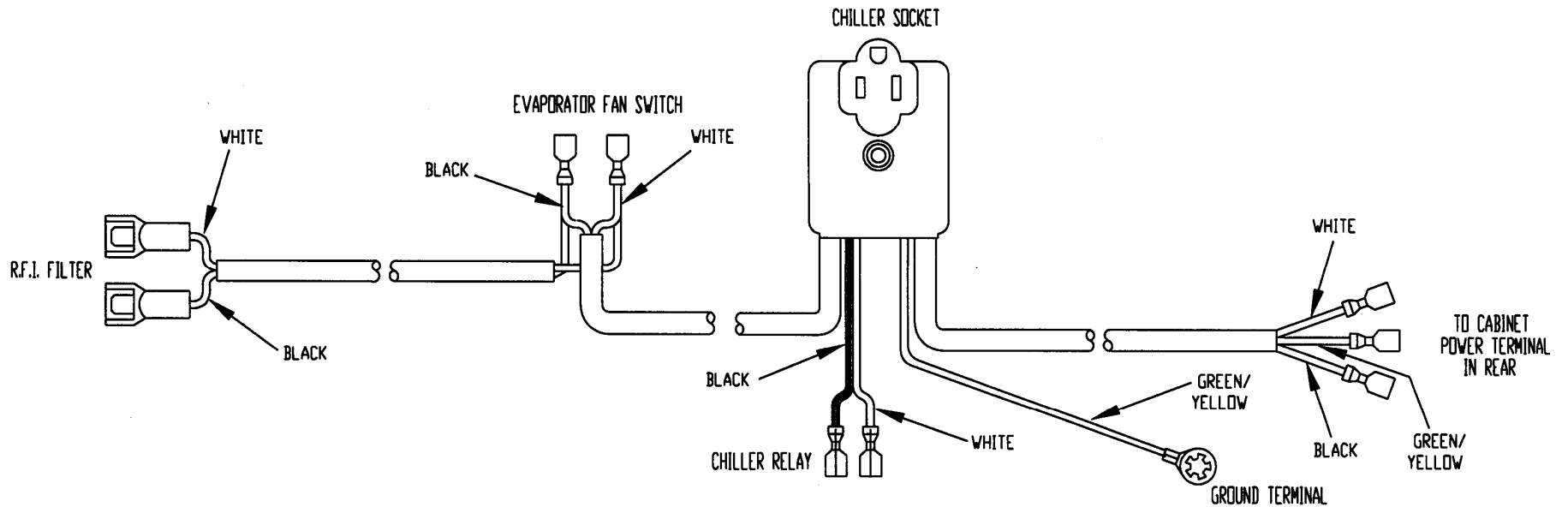


24015-01 HARNESS, DISPLAY

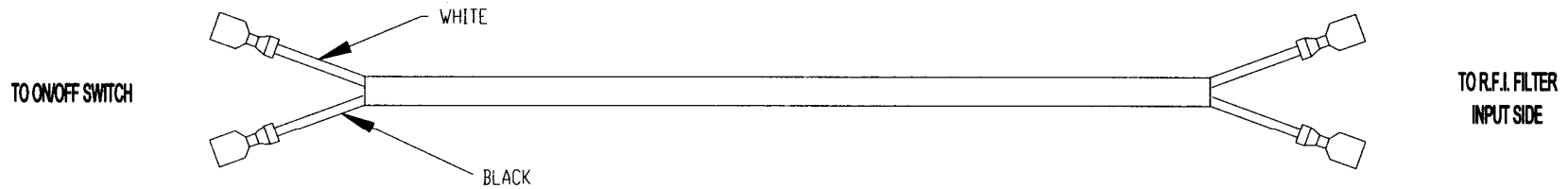


TO 21383 DETECTOR,
DELIVERY SENSOR
TERMINAL J3

21468 THERMOSTAT TYPE TEMPERATURE SENSOR

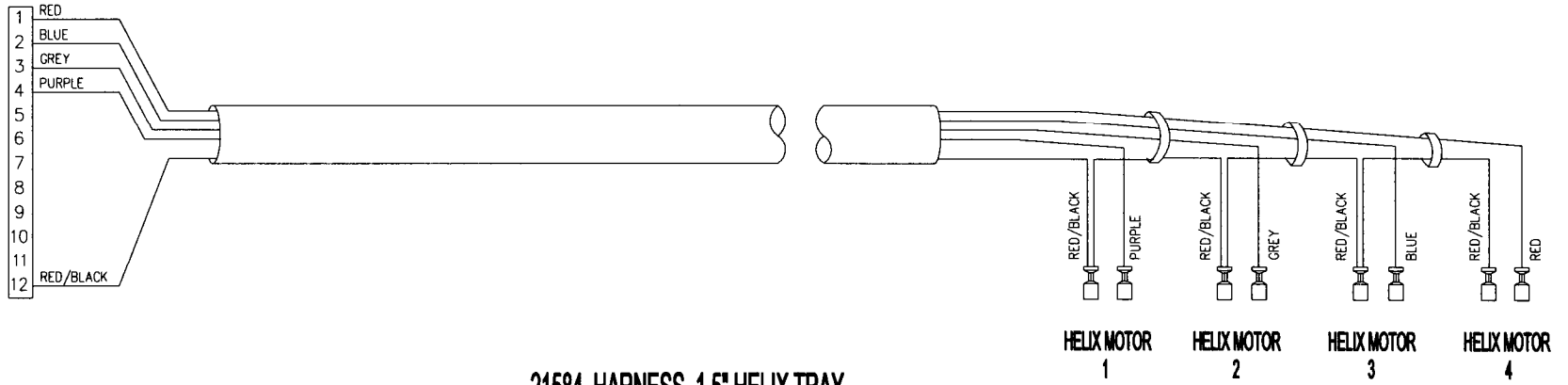


21484, HARNESS, POWER DISTRIBUTION, INTEGRAL SOCKET, ON/OFF SWITCH

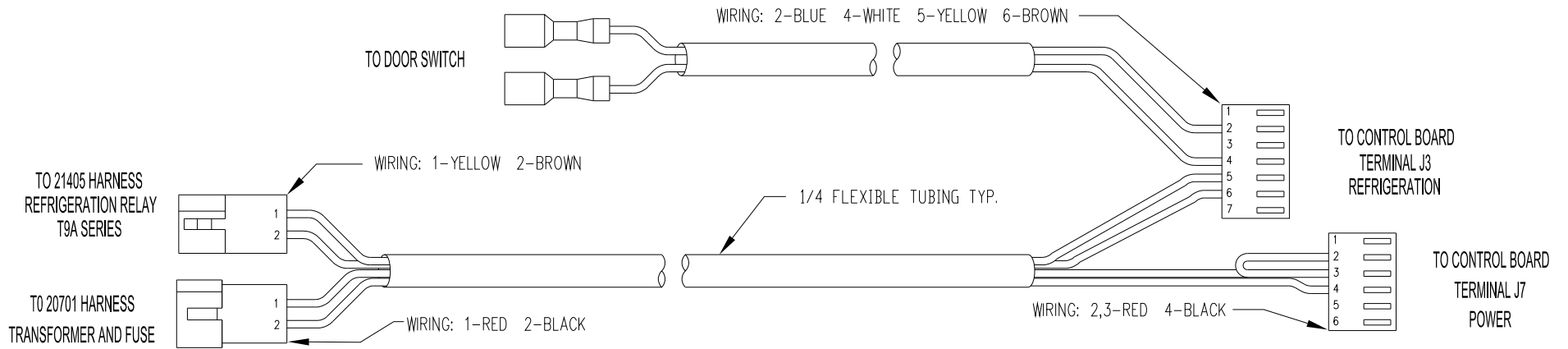


21485, HARNESS, ON/OFF SWITCH

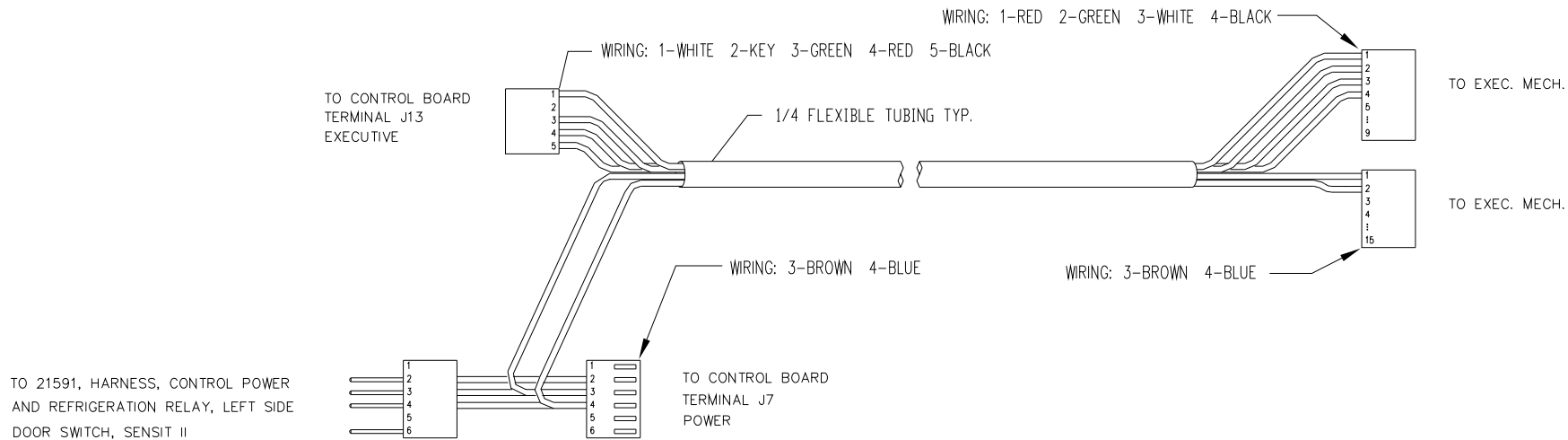
TO 20148 HARNESS
MOTOR DISTRIBUTION



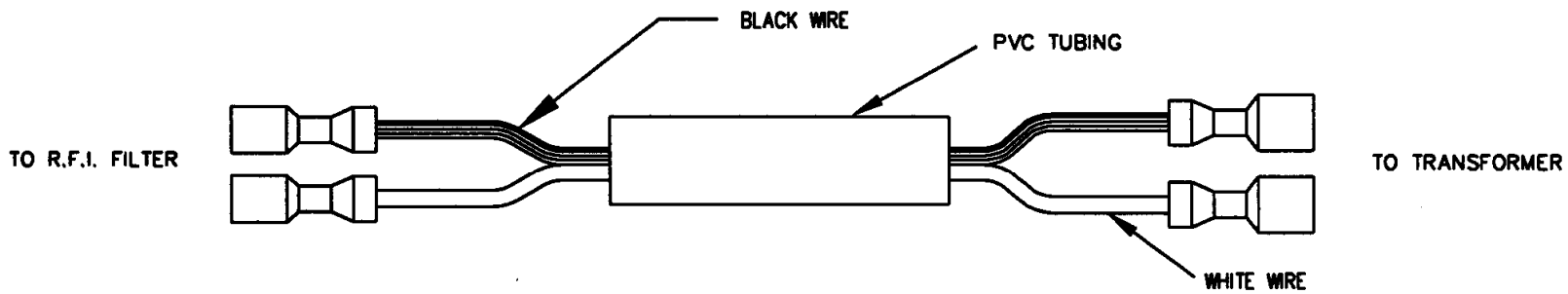
21584, HARNESS, 1.5' HELIX TRAY



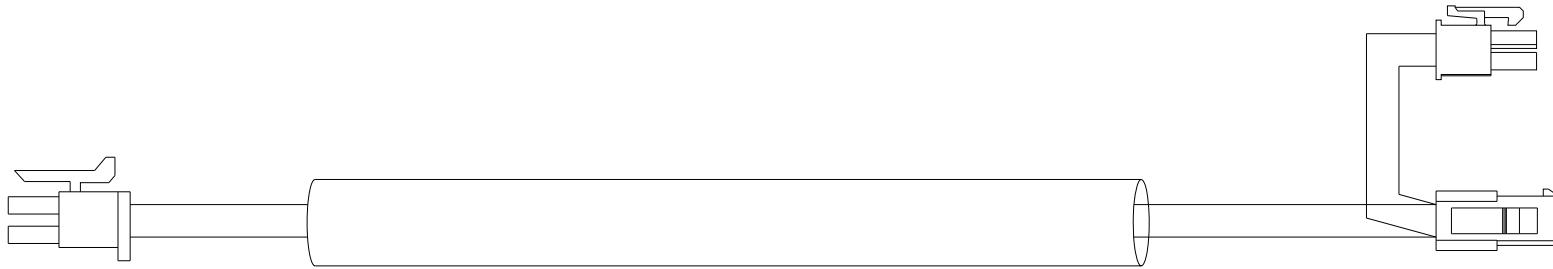
21590, HARNESS, CONTROL POWER AND REFRIGERATION RELAY



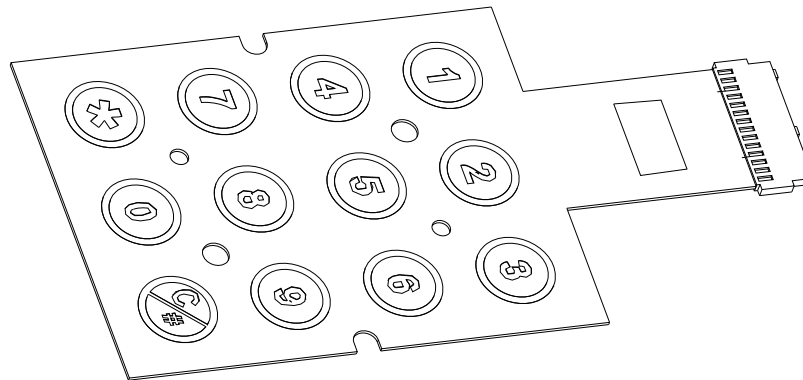
21592, HARNESS, EXEC. MECH., (OPTIONAL, REPLACES 21590)



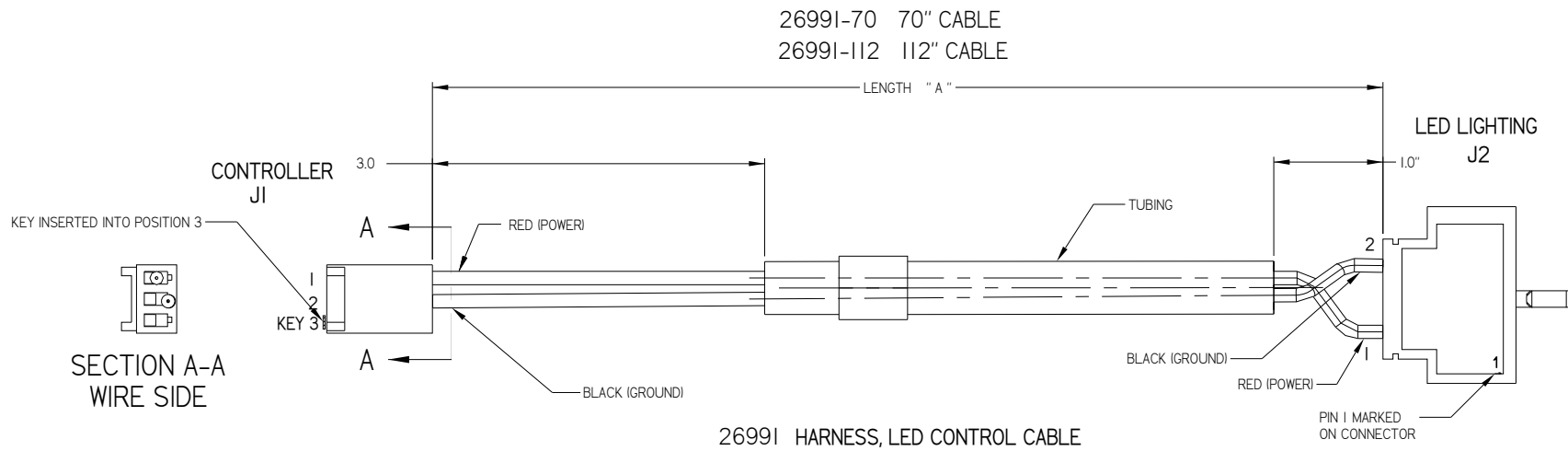
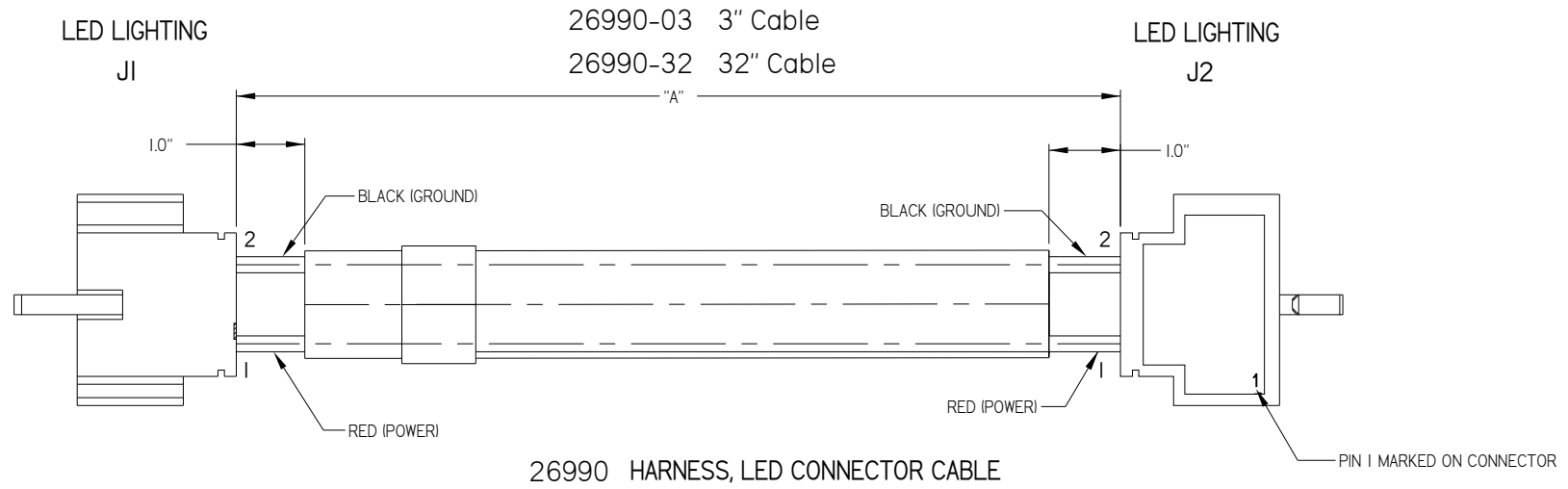
23624, HARNESS, TRANSFORMER, NO BALLAST

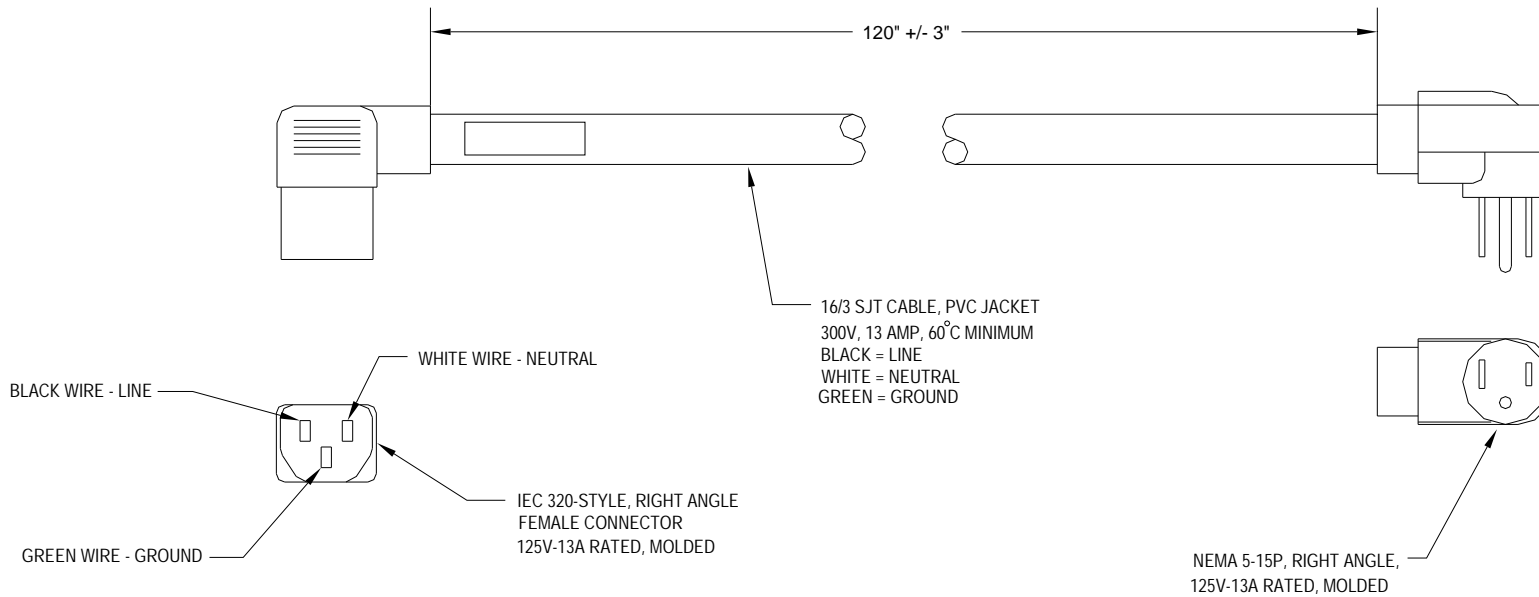


24338 HARNESS, LIGHTED POS POWER

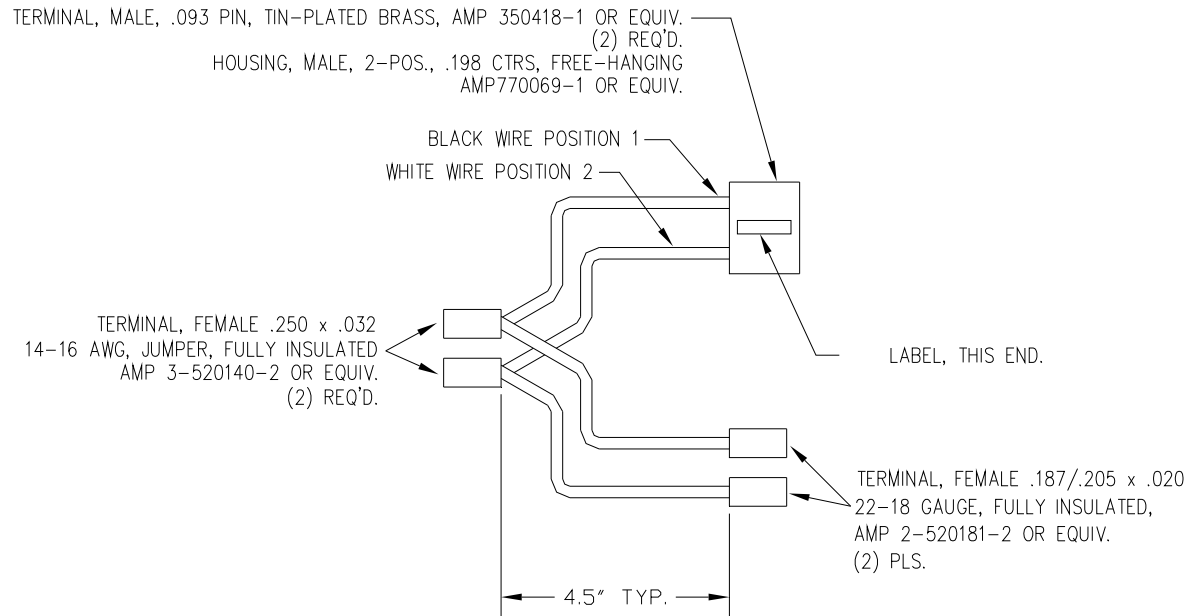


25688 ASSEMBLY, LIGHTED KEYPAD

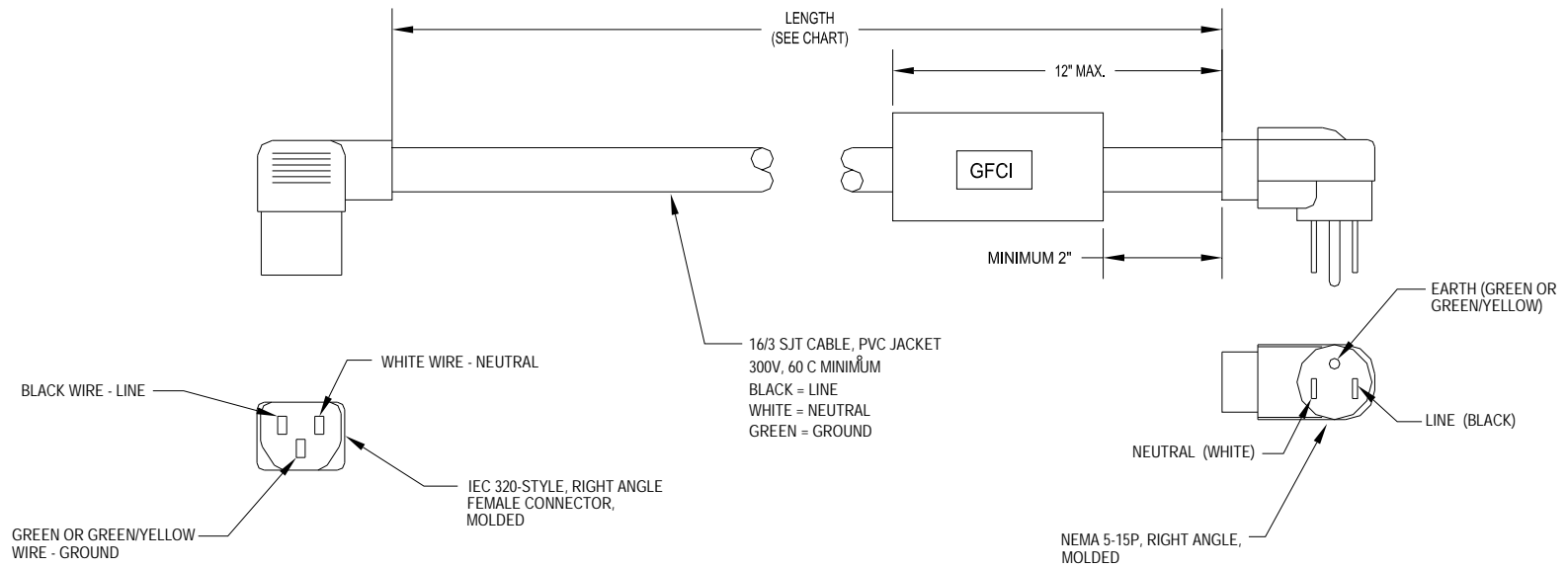




20142, POWER CORD ASSEMBLY, 115V DOMESTIC



20149, HARNESS, BALLAST/TRANSFORMER LINE



22402, POWER CORD ASSEMBLY, 115V, US and CANADA

ELECTRICAL HARNESS PARTS LIST

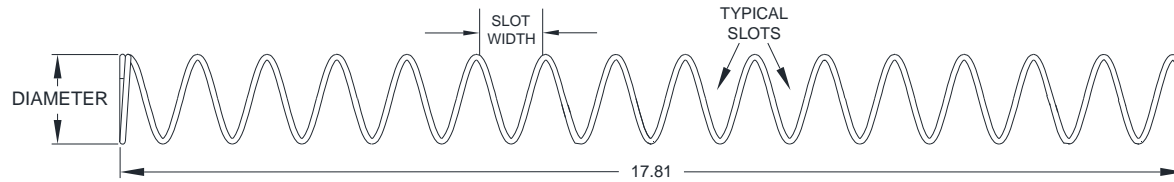
PART NO.	PART DESCRIPTION	QTY.	NOTES
3173	Power Cord, Australia	1	
3193	Power Cord, Continental Europe	1	
3194	Power Cord, U.K. and Ireland	1	
3208	Power Cord, India and South Africa	1	
20142	Power Cord Assembly, 115V Domestic	1	
20144	Harness, Refrigeration	1	For Chiller Power
20146	Harness, Door Motors	1	
20147	Harness, Tray, 10 Column	1	Use For 5 Column Tray
20148	Harness, Motor Distribution	1	
20149	Harness, Ballast/Transformer Line	1	
20154	Harness, R.F.I. Filter Ground	1	
20156-01	Harness, Ground	1	
20158	Harness, Multi-Drop Bus	1	Use For Both SII and S3
20648	Jumper Wire	2	Australia 240V Single
20701	Harness, Transformer and Fuse	1	
21405	Harness, Refrigeration Relay T9A	1	
21425	Harness, Delivery Sensor Detector/Control	1	Primary to Control Board
21426	Harness, Delivery Sensor Detector/Emitter	1	Secondary to Primary Board
21427	Harness, Product Sensor Emitter	1	Secondary to Emitter Board (Optional)
21428	Harness, Product Sensor Detector	1	Primary to Detector Board (Optional)
24015-01	Harness, Display	1	

PART NO.	PART DESCRIPTION	QTY.	NOTES
21468	Temperature Sensor, and Harness	1	Integral to Sensor, for Chiller
21484	Harness, Power Distribution, Integral Socket	1	
21485	Harness, On/Off Switch	1	
21584	Harness, 1.5" Helix Tray	1	
21590	Harness, Control Power & Refrigeration Relay	1	
21592	Harness, Executive Mech. Connector	1	
22402	Power Cord Assembly, 115, US and Canada	1	With GFCI, Use in U.S. and Canada
23624	Harness, Transformer, No Ballast	1	Use with LED Lighting
24338	Lighted POS Power Harness	1	
25688	Assembly, Lighted Keypad	1	
26990-03	Harness, LED Connector Cable, 3"	1	
26990-32	Harness, LED Connector Cable, 32"	1	
26991-70	Harness, LED Control Cable, 70"	1	
26991-112	Harness, LED Control Cable, 112"	1	

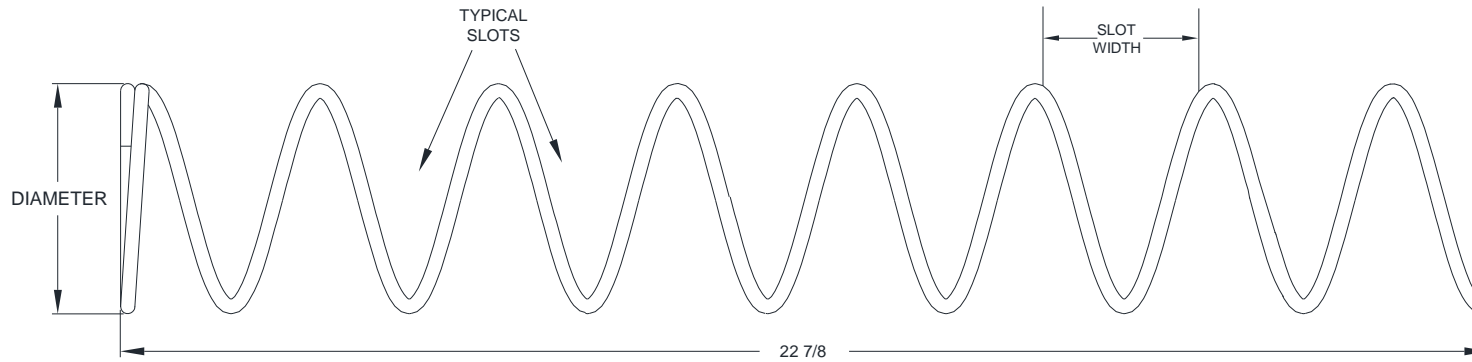
NOTE: Some assemblies, such as the keypad, are fabricated with the harness as a unit. These are replaceable only as a unit. Some harness assemblies listed above are for options which may not have been contracted for and installed by AMS.

THIS PAGE INTENTIONALLY LEFT BLANK

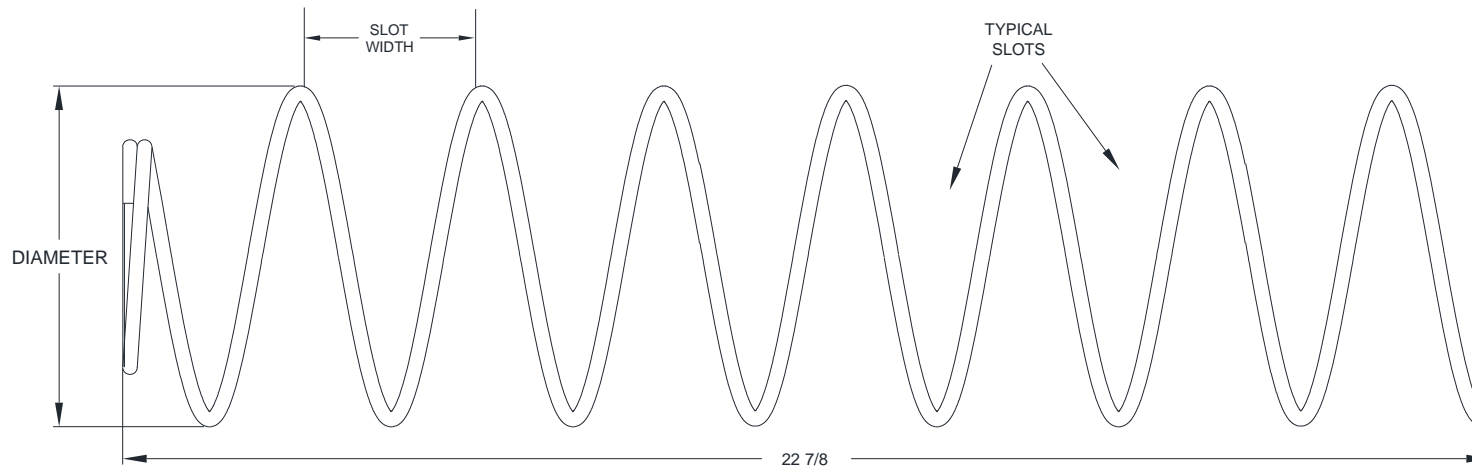
HELIX ILLUSTRATIONS



TYPICAL 1.5 HELIX TRAY SMALL HELIX



TYPICAL SMALL HELIX



TYPICAL LARGE HELIX

HELIX PARTS LIST

PART NO.	HELIX DESCRIPTION *	SLOT (VEND) WIDTH	NUMBER OF SLOTS (PITCH)	HELIX OUTSIDE DIAMETER	TURNS	QTY. PER COLUMN	NOTES
20119-07	Helix, Small CW, Black	2 5/8	7	2.6	CW	1 Set	Use With 20120-07 As A Set
20120-07	Helix, Small CCW, Black	2 5/8	7	2.6	CCW	1 Set	
20119-10	Helix, Small CW, Black	1 7/8	10	2.6	CW	1 Set	Use With 20120-10 As A Set
20120-10	Helix, Small CCW, Black	1 7/8	10	2.6	CCW	1 Set	
20119-05	Helix, Small CW, Black	4	5	2.6	CW	1	
20119-09	Helix, Small CW, Black	2 1/4	9	2.6	CW	1	
20120-05	Helix, Small CW, Black	4	5	2.6	CCW	1	
20120-08	Helix, Small CCW, Black	2 1/2	8	2.6	CCW	1	
20120-09	Helix, Small CCW, Black	2 1/4	9	2.6	CCW	1	
20120-12	Helix, Small CCW, Black	1 7/8	12	2.6	CCW	1	
20120-15	Helix, Small CCW, Black	1 7/8	15	2.6	CCW	1	
20120-18	Helix, Small CCW, Black	1 7/8	18	2.6	CCW	1	
20120-24	Helix, Small CCW, Black	1 7/8	24	2.6	CCW	1	
20120-32	Helix, Small CCW, Black	1/2	32	2.6	CCW	1	
21207-15	Helix, 1.5", CCW, Black	1	15	1.5	CCW	1	Use in 1.5" Helix Tray
21207-25	Helix, 1.5", CCW, Black	9/16	25	1.5	CCW	1	Use in 1.5" Helix Tray
21336	Helix, 3", CCW, Black	3 1/2	6	3	CCW	1	Bottle Tray
21337	Helix, 3", CCW, Black	3 1/5	6	3	CCW	1	Bottle Tray

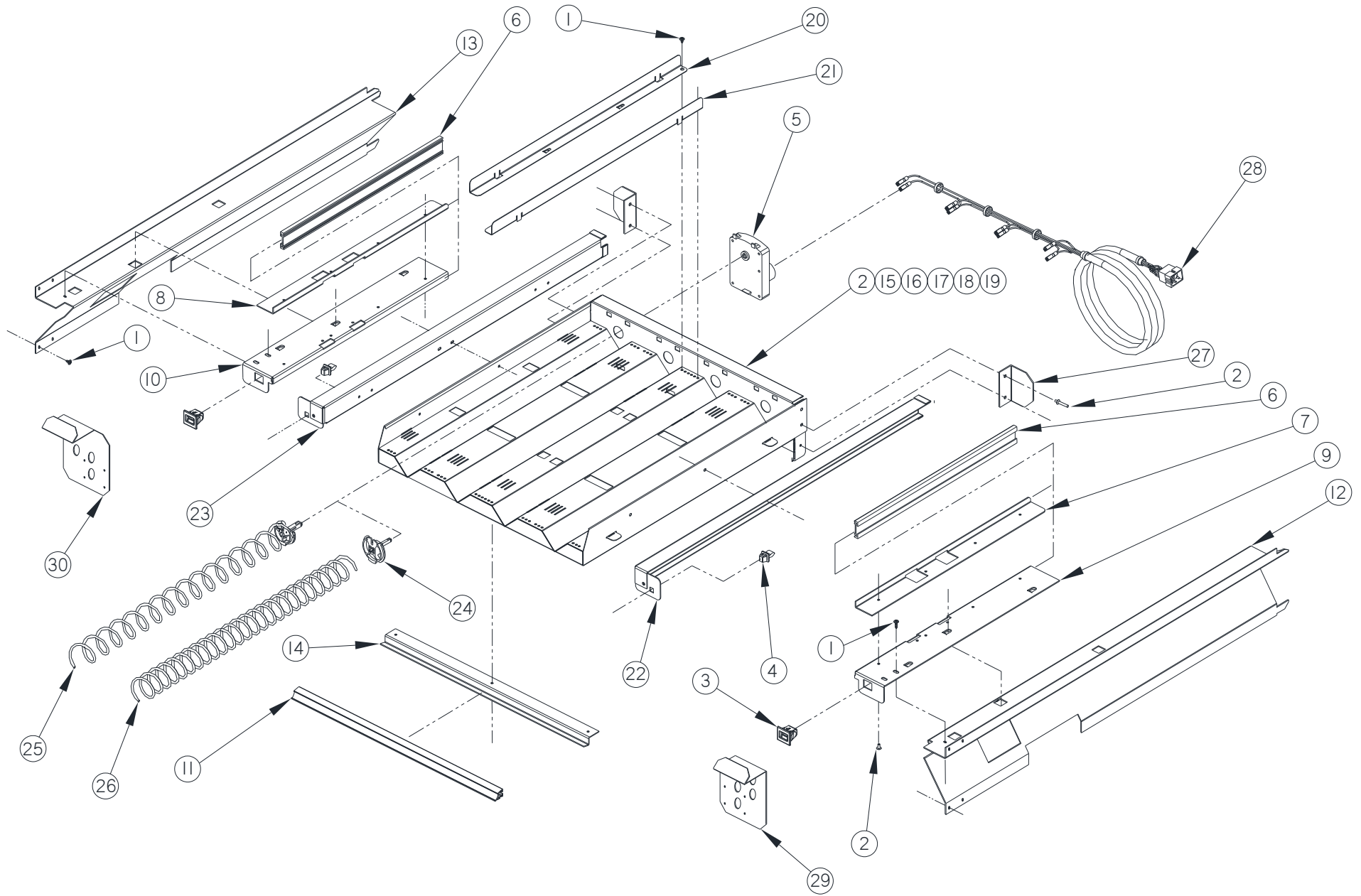
*Contact your distributor for special helix diameters and pitch. Contact AMS for your application.

PART NO.	HELIX DESCRIPTION *	SLOT (VEND) WIDTH	NUMBER OF SLOTS (PITCH)	HELIX OUTSIDE DIA.METER	TURNS	QTY. PER COLUMN	NOTES
21465-04	Helix, 3.75" CCW, Black	4 1/8	4	3.75	CCW	1	Large Diameter
21465-05	Helix, 3.75" CCW, Black	3 1/4	5	3.75	CCW	1	Large Diameter
21465-07	Helix, 3.75" CCW, Black	2 5/8	7	3.75	CCW	1	Large Diameter
21465-09	Helix, 3.75" CCW, Black	2	9	3.75	CCW	1	Large Diameter
21465-10	Helix, 3.75" CCW, Black	1 3/4	10	3.75	CCW	1	Large Diameter
21465-12	Helix, 3.75" CCW, Black	1 1/2	12	3.75	CCW	1	Large Diameter
21465-15	Helix, 3.75" CCW, Black	1 1/4	15	3.75	CCW	1	Large Diameter
23268-10	Helix, 1.5", CCW, Black	1 7/8	10	1.5	CCW	1	Use in 1.5" Helix Tray
23268-20	Helix, 1.5", CCW, Black	1	20	1.5	CCW	1	Use in 1.5" Helix Tray
23268-32	Helix, 1.5", CCW, Black	1/2	32	1.5	CCW	1	Use in 1.5" Helix Tray

*Contact your distributor for special helix diameters and pitch. Contact AMS for your application.

THIS PAGE INTENTIONALLY LEFT BLANK

1.5" HELIX TRAY ILLUSTRATIONS

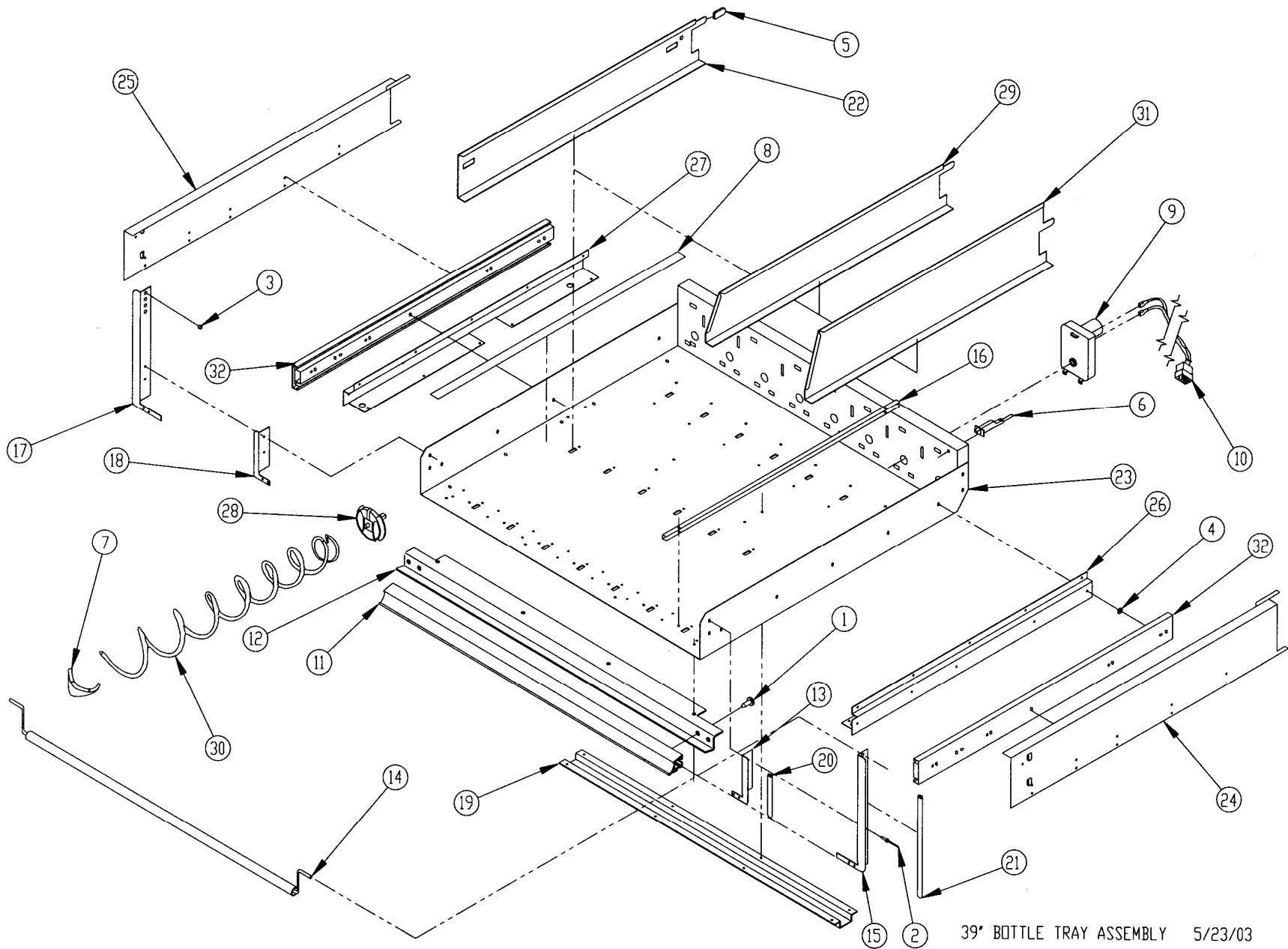


1.5" HELIX TRAY PARTS LIST

ITEM	PART NO.	PART DESCRIPTION	QTY.	NOTES
1	3000	Screw, TEK 8-18	18	
2	3009-02	Rivet, Pop, Steel, 1/8	34	
3	3246	Latch, Nylon, Gum and Mint	2	
4	3247	Strike, Nylon, Gum and Mint	2	
5	23007	Motor, Single Helix	4	
6	20236	Extrusion, Gum and Mint Rail	2	
7	20237	Extrusion Mount, Upper (Gum and Mint)(Right Side)	1	
8	20237-01	Extrusion Mount, Upper (Gum and Mint)(Left Side)	1	
9	20238	Extrusion Mount, Lower (Gum and Mint)(Right Side)	1	
10	20238-01	Extrusion Mount, Lower (Gum and Mint)(Left Side)	1	
11	20465-04	Extrusion, Price Marker, Reduced Height	1	
12	21046	Rail, Gum and Mint, Reduced Depth (35")(Right Side)	1	Rails To Fit Tray To 35" Cabinet
	20973	Rail, Gum and Mint, Reduced Depth (39")(Right Side)		Rails To Fit Tray To 39" Cabinet
13	21046-01	Rail, Gum and Mint, Reduced Depth (35")(Left Side)	1	Rails To Fit Tray To 35" Cabinet
	20973-01	Rail, Gum and Mint, Reduced Depth (39")(Left Side)		Rails To Fit Tray To 39" Cabinet
14	21196	Doubler, Tray 1.5" Helix Tray	1	Parts Are Factory Assembled As A Unit
15	21197	Tray Body, 1.5" Helix Tray	1	
16	21199	Tray Back, 1.5" Helix Tray	1	
17	21200	Tray Inner Side, 1.5" Helix Tray	2	
18	21201	Tray Inner Section, 1.5" Helix Tray	2	
19	21202	Tray Inner Mid Section, 1.5" Helix Tray	1	
20	21203	Divider, Tray, 1.5" Helix Tray, RH	4	
21	21203-01	Divider, Tray, 1.5" Helix Tray, LH	4	
22	21204	Tray Slide Channel,1.5" Helix Tray, RH	1	
23	21204-01	Tray Slide Channel,1.5" Helix Tray, LH	1	
24	21206	Helix Adapter, 1.5" Helix Tray	4	Tray is Equipped With Two of Each
25	21207-15	Helix, 1.5" Tray, Counterclockwise, Black	2	
26	21207-25	Helix, 1.5" Tray, Counterclockwise, Black	2	
27	21523	Bracket, Stop, 1.5" Helix Tray	2	
28	21584	Harness, 1.5" Helix Tray	1	
29	22387	Deflector, 1.5" Helix Tray, RH (39")		Use When 1.5" Tray Is Installed
30	22387-01	Deflector, 1.5" Helix Tray, LH, (39")		Use When 1.5" Tray Is Installed

NOTE: Tray also comes in scrolling price option. Contact your distributor for details.

BOTTLE TRAY ILLUSTRATION



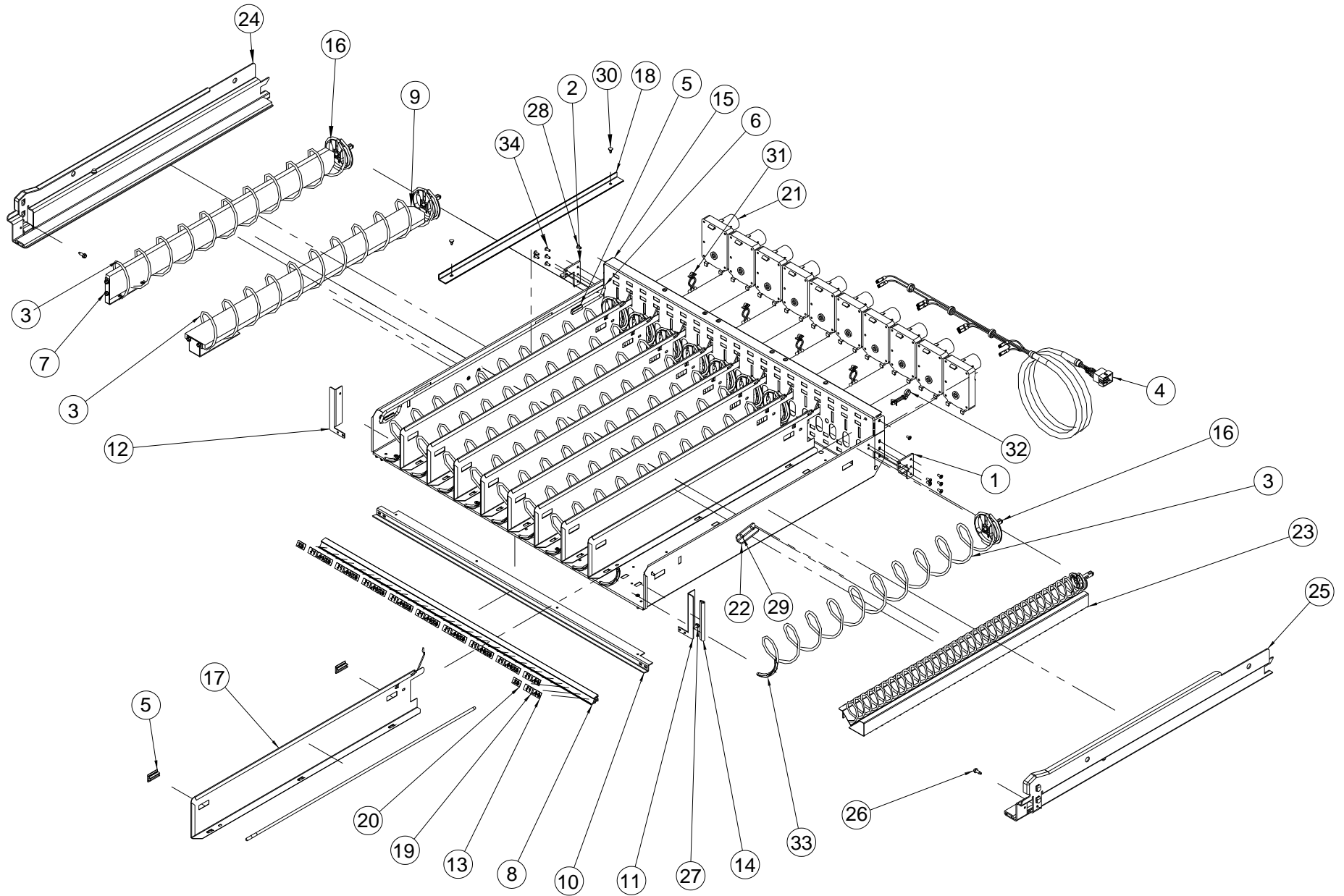
BOTTLE TRAY PARTS LIST

ITEM	PART NO.	PART DESCRIPTION	NOTE
1	3001-03	Screw, Sheet Metal, Type B, 8-18	
2	3009-02	Rivet, Pop, Steel, 1/8	
3	3015	Bearing, Nyliner, Snap-In	Use On 20691 And 20724 for Bottle Tipper
4	3017-05	Washer, Flat Steel	
5	3021	Protective Cap, Vinyl	Obsolete Part
6	3042-01	Wire Tie, Panel Mount	
7	3111	Helix Ejector, Small Helix	
8	3189-01	Tape, UHMW Polyethylene, 3/4" X .005"	
9	20086	Motor, Single Helix W/O Switch	
10	20147	Harness, Tray, 8 Column	
11	20465-03	Extrusion, Price Marker, Ver. 2	
12	20644	Tray Doubler, Bottle (39")	
13	20672	Tray Corner, Bottle, Right	Use With 20690 Without Bottle Tipper
14	20690	Assembly, Bottle Tipper Bar	
15	20691	Tray Corner, Bottle Tipper Bar, Right	Use With 20690 For Bottle Tipper
16	20692	Device, Bottle Alignment	
17	20724	Tray Corner, Bottle Tipper Bar, Left	Use With 20690 For Bottle Tipper
18	20725	Tray Corner, Bottle, Left	Use With 20690 Without Bottle Tipper
19	20775	Tray Reinforcement, Bottle (39") Ver. 2	
20	20796-01	Edge Guard, Tray Corner (Only RH)	Use On 20672 Without Bottle Tipper
21	20796-02	Edge Guard, Tray Corner (Only RH)	Use On 20691 For Bottle Tipper
22	20956	Tray Divider, Reduced Depth (Square Front)	3.37" High (Optional Part)
23	20960	Tray Body, Bottle, Reduced Depth (39")	
24	20980	Rail, Bottle Tray, Reduced Depth (RH)	
25	20980-01	Rail, Bottle Tray, Reduced Depth (LH)	
26	20962	Bracket, Bottle Tray Rail, Reduced Depth (RH)	

ITEM	PART NO.	PART DESCRIPTION	NOTE
27	20962-01	Bracket, Bottle Tray Rail, Reduced Depth (LH)	
28	20966	Helix Adapter, Without Hub	
29	21276	Tray Divider, Reduced Depth, Tapered Front	3.37" High
30	21336	Helix, 3" Counter-Clockwise	See Helix Description Section For Options.
31	21374	Tray Divider, Reduced Depth, Tapered Front, High	4.9" High (Optional Part)
32	21475-02	Rail Slide, Full Extension, 24"	1 Pair

THIS PAGE INTENTIONALLY LEFT BLANK

UNIVERSAL (SNACK/CANDY/FOOD) TRAY ILLUSTRATION



UNIVERSAL (SNACK/CANDY/FOOD) TRAY PARTS LIST

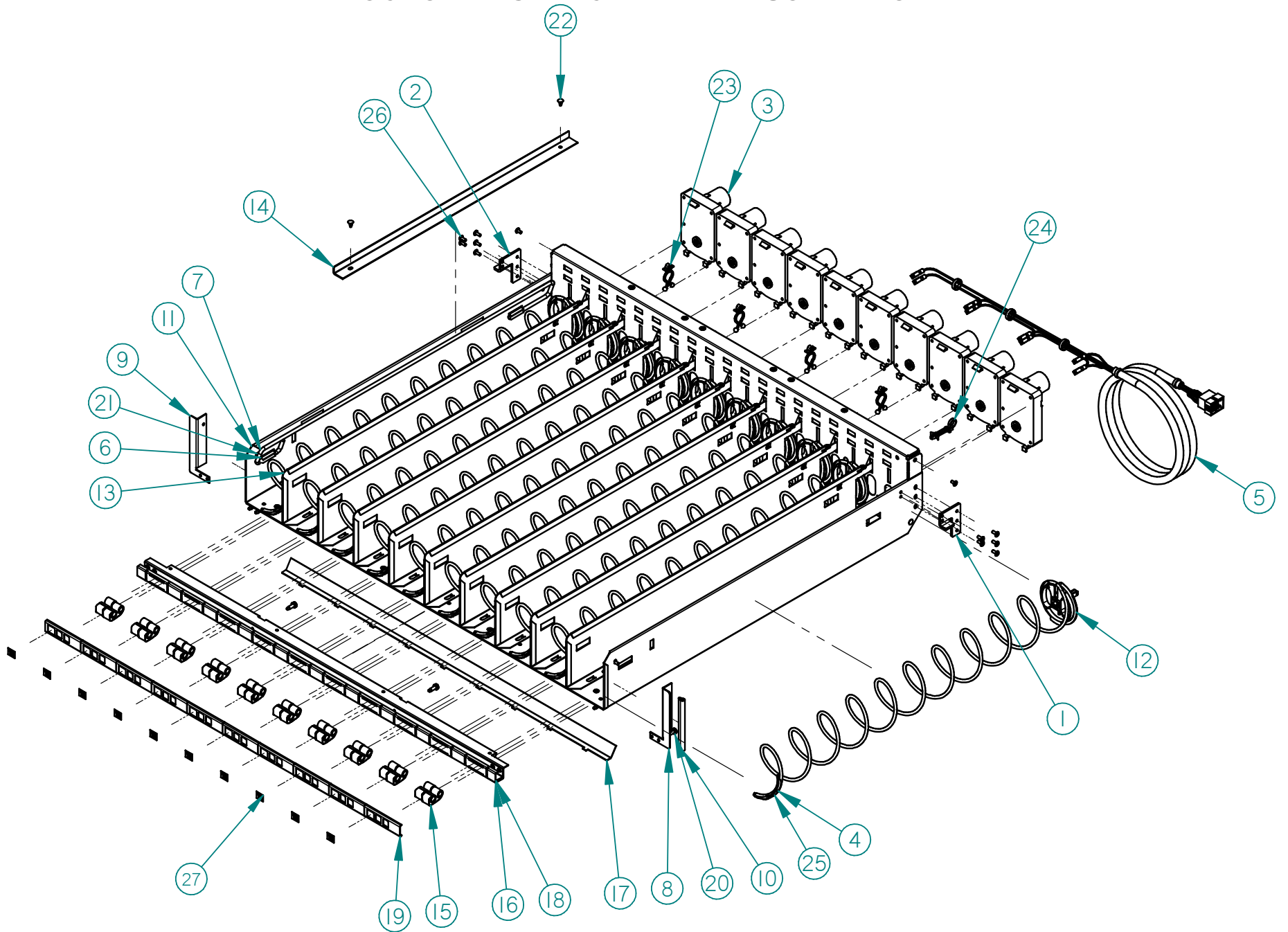
ITEM	PART NO.	PART DESCRIPTION	NOTES
1	20073	Tray Stop	
2	20073-01	Tray Stop, LH	
3	-----	Helix	1 Per Column, See Helix Section
4	20147	Harness, Tray 10 Column	
5	20220	Extrusion, Candy Pusher	Optional, 2 Per 20221 & Divider With Cutouts
6	20221	Bar, Candy Pusher	Optional, 1 Per Divider With Cutouts
7	20450	Kit, Helix Splitter	Optional, 1 Per Selection
8	20465-02	Extrusion, Price Marker, Reduced Height (35")	
	20465-01	Extrusion, Price Marker, Reduced Height (39")	
9	20535	Kit, Cup Rail, Small Helix	Optional, 1 Per Selection
	20536	Kit, Cup Rail, 4" Helix	
10	20643	Tray Doubler, Ver. 2 (35")	
	20544	Tray Doubler, Ver. 2 (39")	
11	20545	Tray Corner, Ver. 2 (RH)	
12	20545-01	Tray Corner, Ver. 2 (LH)	
13	20614	Label Sheet, Reduced Height, Price	
14	20796-01	Edge Trim, Tray Corner	Right Hand Corner Only
15	24039	Tray Body, (35")	
	24038	Tray Body, (39")	
16	20966	Helix Adaptor, Without Hub	
17	21138	Assembly, Tray Divider	Includes Divider With 20133 Spring, Select Type, Numbers To Form Columns
	21139	Assembly, Tray Divider, High	
	23664	Assembly, Tray Divider, Extra High	
18	22192	Helix Alignment Device, PVC	
19	22908	Label Sheet, Reduced Height, Price W/\$	
20	22909	Label Sheet, Reduced Height, Location, White	
21	23007	Motor, With Home Circuit, CCW	Optional
	23007-01	Motor, With Home Circuit, CW	
22	24046	Kit, Mini-Dispenser	Optional, 1 Per Selection

ITEM	PART NO.	PART DESCRIPTION	NOTES
24	22250	Assembly, Tray Rail, Snack (RH)	
25	22251	Assembly, Tray Rail, Snack (LH)	
26	3000	Screw, Sheet Metal Tek – 8-18	
27	3001-03	Screw, Sheet Metal, Type B, #8-18	Safety Screws For Rails
28	3009-02	Rivet, Steel, Black 1/8 Dia. X 1/8 Grip	
29	3009-04	Rivet, Steel, Black 1/8 Dia. X ¼ Grip	
30	3019	Canoe Clip	2 Per Helix Alignment Device
31	3020	Wire Tie, Stand Off	
32	3042-01	Wire Tie, Panel Mount	
33	3111	Helix Ejector	
34	3295-03	Rivet, Steel, 1/8", Plated	

NOTE: Tray also comes in scrolling price option. Contact your AMS distributor for details.

THIS PAGE INTENTIONALLY LEFT BLANK

SCROLLING PRICE TRAY ILLUSTRATION



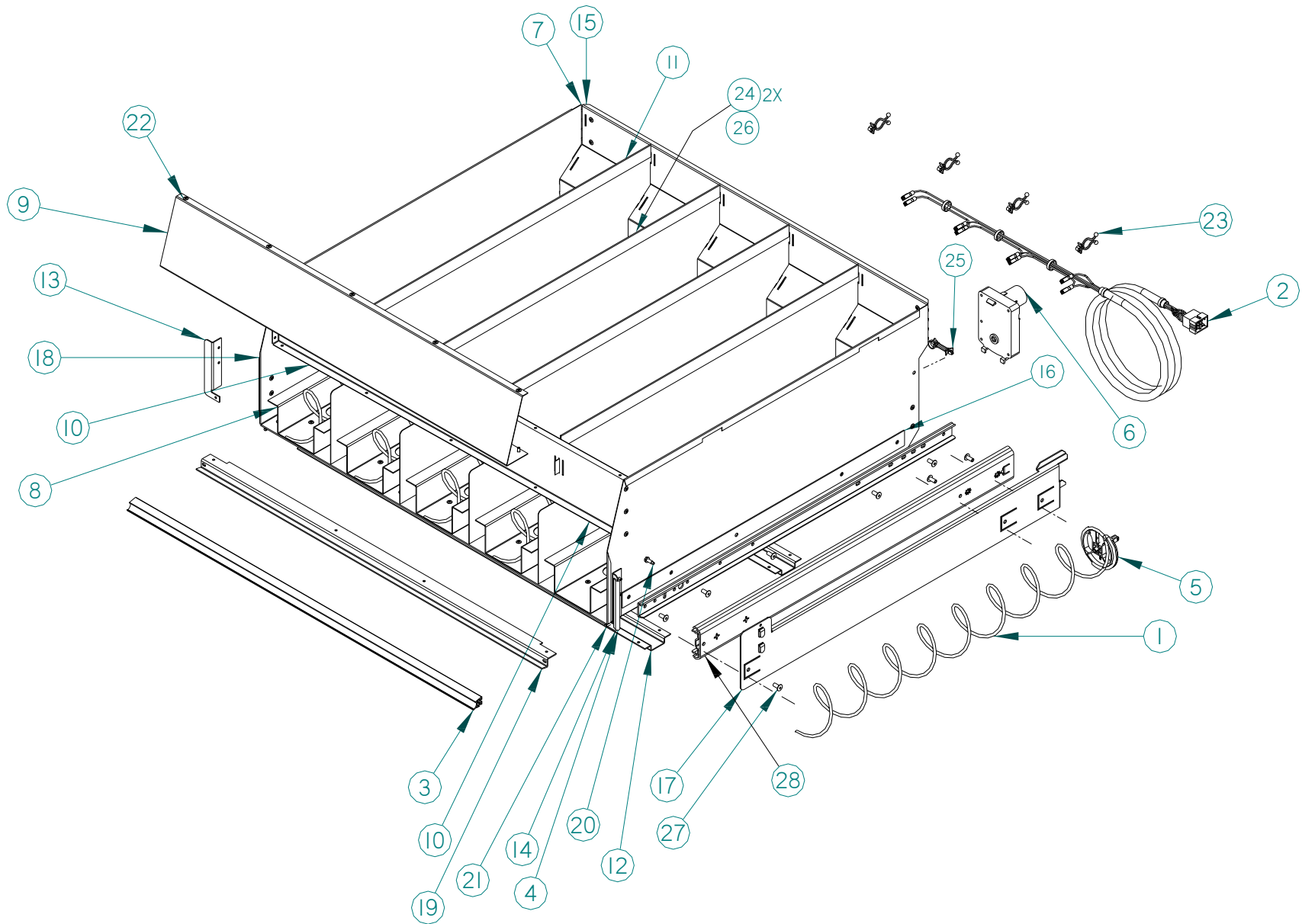
SCROLLING PRICE TRAY PARTS LIST

ITEM	PART NO.	PART DESCRIPTION	NOTE
1	20073	TRAY STOP	
2	20073-01	TRAY STOP LEFT	
3	23007	MOTOR, COUNTER CLOCKWISE	
	23007-01	MOTOR, CLOCKWISE	OPTIONAL
4	-----	HELIX	SEE HELIX TABLE
5	20147	HARNESS, TRAY 10 COLUMN	
6	20220	EXTRUSION, CANDY PUSHER	OPTIONAL
7	20021	BAR, CANDY PUSHER	OPTIONAL
8	20545	TRAY CORNER, RH	
9	20545-01	TRAY CORNER, LH	
10	20796-01	EDGE TRIM, TRAY CORNER	RIGHT HAND SIDE ONLY
11	20955	TRAY BODY (39")	
	21045	TRAY BODY (35")	
12	20966	HELIX ADAPTOR	
13	21138	DIVIDER, STANDARD, 3 3/8" High	
	21139	DIVIDER, HIGH, 4 7/8" High	OPTIONAL
	23664	DIVIDER, EXTRA HIGH, 8" High	OPTIONAL
14	22192	HELIX ALIGNMENT DEVICE	OPTIONAL
15	23322	SCROLL, PRICE LABEL, 1-20	
	23321	SCROLL, PRICE LABEL, .00-.95	
16	23785	TRAY STIFFENER	
17	23786	TRAY STIFFENER COVER	
18	23787	GUIDE	
19	23791	10 SELECT COVER	
	23791-01	10 SELECT COVER, NO WINDOWS	OPTIONAL, FOR DUAL HELIX SELECTION

ITEM	PART NO.	PART DESCRIPTION	NOTE
19	23791	10 SELECT COVER	
	23791-01	10 SELECT COVER, NO WINDOWS	OPTIONAL, FOR DUAL HELIX SELECTION
20	3000	SCREW	
21	3009-02	RIVET	
22	3019	CANOE CLIP	
23	3020	WIRE TIE STANDOFF	
24	3042-01	WIRE TIE, PANEL MOUNT	
25	3111	HELIX EJECTOR	
26	3295-03	RIVET	
27	23292	LOCATION LABEL	

THIS PAGE INTENTIONALLY LEFT BLANK

35" and 39" HORIZONTAL CAN TRAY ILLUSTRATION



35" and 39" HORIZONTAL CAN TRAY PARTS LIST

ITEM	PART NO.	PART DESCRIPTION	NOTE
-	24106	ASSY., TRAY, HORIZONTAL CAN, 5 SELECT, 39", S/P V2	
-	24223	ASSY., TRAY, HORIZONTAL CAN, 5 SELECT, 39"	
-	24985	ASSY, TRAY, HORIZONTAL CAN, 4 SELECT, 35", S/P	
-	24975	ASSY., TRAY, HORIZONTAL CAN, 4 SELECT, 35"	
1	20120-07	HELIX, SMALL, CCW, 7-PITCH	1 PER COLUMN. CONTACT AMS FOR YOUR APPLICATION
	20120-08	HELIX, SMALL CCW, 8-PITCH	
2	20147	HARNESS, TRAY, 10 COLUMN	
*3	20465-08	EXTRUSION, PRICE MARKER, 21.2" (35")	
	20465-07	EXTRUSION, PRICE MARKER, 26.5" (39")	
4	20796-01	EDGE TRIM, TRAY CORNER	RIGHT HAND CORNER ONLY
5	20966	HELIX ADAPTOR, WITHOUT HUB	
6	23007	MOTOR, WITH HOME CIRCUIT, CCW	
7	24976	TRAY BODY, HORIZONTAL CAN, 4 SELECT (35")	
	24107	TRAY BODY, HORIZONTAL CAN, 5 SELECT (39")	
8	24110	SUPPORT, CAN/HELIX, HORIZONTAL CAN TRAY	
9	24979	RESTRICTOR, FRONT, HORIZONTAL CAN TRAY, 4 SELECT (35")	
	24112	RESTRICTOR, FRONT, HORIZONTAL CAN TRAY, 5 SELECT (39")	
10	24983	RESTRICTOR, BACK, HORIZONTAL CAN TRAY, 4 SELECT (35")	
	24113	RESTRICTOR, BACK, HORIZONTAL CAN TRAY, 5 SELECT (39")	
11	24114	DIVIDER, HORIZONTAL CAN TRAY	CONTACT AMS FOR YOUR APPLICATION
12	24978	REINFORCEMENT, HORIZONTAL CAN TRAY, 35"	
	24120	REINFORCEMENT, HORIZONTAL CAN TRAY, 39"	
13	24121	CORNER, LEFT, S/P, HORIZONTAL CAN TRAY	
14	24122	CORNER, RICHT, S/P, HORIZONTAL CAN TRAY	

35 & 39 HORIZONTAL CAN TRAY PARTS LIST*

ITEM	PART NO.	PART DESCRIPTION	NOTE
15	24977	PANEL, BACK, HORIZONTAL CAN TRAY, 4 SELECT 35"	
	24149	PANEL, BACK, HORIZONTAL CAN TRAY, 5 SELECT 39"	
16	24171	SPACER, RAIL SLIDE, HORIZONTAL CAN TRAY	
17	24191	RAIL, SLIDE MOUNTING, RH, HORIZONTAL CAN TRAY	
18	24191-01	RAIL, SLIDE MOUNTING, LH, HORIZONTAL CAN TRAY	
19	24984	DOUBLER, TRAY, HORIZONTAL CAN, 35"	
	24224	DOUBLER, TRAY, HORIZONTAL CAN, 39"	
20	3000	SCREW, SHEET METAL, TEK – 8-18	
21	3001-03	SCREW, STEEL METAL, TYPE B, #8-18	
22	3009-02	RIVET, STEEL, BLACK, 1/8 DIA X 1/8 GRIP	
23	3020	WIRE TIE, STANDOFF	
24	3023-11	WASHER, FLAT, NYLON	
25	3042-01	WIRE TIE, PANEL MOUNT	
26	3286-03	SNAP RIVET	
27	3709-02	RIVET, STEEL, 3/16 DIA., .125 TO .25 GRIP L	

*Tray also comes in scrolling price option. Contact your distributor for details.